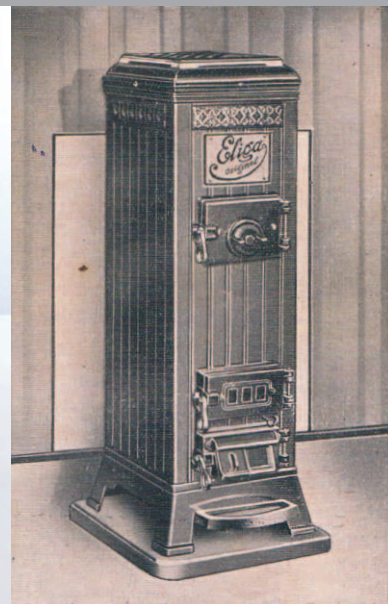


The company Elsässer then and now



eliga
2016-2018

Our Products A - Z

A		F		L		S	
Accessories for infrared cabin	36/37	Fans	15	Ladles	6/7	Sauna infusion automatic	10
Accessories for steam bath	38/39	Feather elements for benches	16	LED-coloured-lights	13	Sauna infusion concentrates	8/9
Accessory sets for sauna	7	Filling tap	8	Light shades	12	Sauna lights	12/13
Additional power units	33	Fittings for doors	18/19, 20/21	Lights for sauna	12/13	Sauna literature	30
Adjustable eccentric	19	Flood showers/buckets	26	Lights for steam bath	39	Sauna measuring devices	4/5
Adjustment hinge for benches	16	Floor mats	17	Literature	30	Sauna pillows	16
Air ventilation products	14/15	Foot basins	28	Locking latches	24/25	Sauna stones	10
Aluminium foils	15	Foot disinfectant device	29	Loud speakers	14	Scent concentrates	8/9
Aluminium self-adhesive tapes	15	Foot mats	17	Löyly ladles	6/7	Scent sprays	9
Aroma/Infusion pot for sauna	10	Foot rests	16	M		Sealings for doors	25
Aroma pot for infrared cabin	36	Foot tubs	28	Magnets	24/25	Self-closing water tap	27
Athlete's foot disinfectant	29	Foot warming mat	37	Massage brushes	31	Self-service shelf	7
Audio	14	Fragrance concentrates for sauna	8/9	Mats	17	Shower and sauna salts	10
Automatic sprinkler for sauna	10	Fragrances for steam bath	38	Measuring devices for infrared cabins	36	Shower buckets and shower heads	26
B		Fragrance herbs	9	Measuring devices for sauna	4/5	Signs	10/11, 27, 30/31, 33, 36/37, 38/39
Back rests	16	G		Menthol crystals	9	Silicone cables	12, 33
Bathing procedure sauna for kids	31	Gas-fuelled heaters	34/35	Moisture barriers	15	Silicone seals	25
Bathing shoes	29	Gift sets	11	Moisture meters	5	Sitting towels	17
Bench spring elements	16	Glass cylinders for sand timers	4	MP3-radio	14	Skin care products	11
Birch leaves infusion bags	8	Glass door closers	20/21, 24/25	N		Spoons	6/7
Books	30	Glass door handles	22/23	Neck pillows	16	Spring elements for benches	16
Brine solution atomizer	15	Glass door hinges	18/19, 20/21	O		Spring roller catches	24
Brochures	30	Glass sealings	25	Opener for canister	8	Starry sky projector	13
Brushes	31	Glasses holder	30	P		Steam and infusion stones	10
Buckets flood shower	26	H		Peeling salts	10	Steam bath accessories	38/39
Buckets for sauna infusion	6/7	Handles	22/23	Pillows	16	Steam bath fragrances	38
C		Head rests	16	Plastic floor mats	17	Steam generators	38
Cables	12, 33	Heaters electrical	32	Plastic insert for foot basins	28	Stones	10
Canister opener	8	Heaters gas	34/35	Plastic insert for infusion buckets	6	Stool	31
Ceramic foot basins	24	Heaters wood	32	Plunge basins	29	Stoves electrical	32
Cleaning concentrate	11	Herbs	9	Point holding systems for glass	25	Stoves for heating with gas	34/35
Clocks for sauna	4	Hinges for doors	18/19, 20/21	Presents	11	Stoves for heating with wood	32
Clocks for steam bath/swimming pool	39	Hint signs	10/11, 27, 30/31, 33, 36/37, 38/39	R		Supply air grille/slider/valve	14/15
Closers	20/21, 24/25	Holder for glasses	30	Racks	30	Swimming pool clocks	39
Clothes-hooks	30	Holder for walking aids	30	Radio	14	Swimming pool thermometer	29
Coin-operated machines	31	Honey creams	11	Roll closures	24	T	
Coloured light devices	13	Hooks	30	Room spray scents	9	Textiles	17
Control devices for sauna heaters	33	Hygrometers	5	Room thermometers	31	Thermometers	5
D		I		Ruleboards for infrared cabin	36	Thermo-wood products	4/5, 6/7, 16
Diabase stones	10	Illumination	12/13	Ruleboards for sauna	30	Timers	4, 39
Disinfectant device for feet	29	Information signs	10/11, 27, 30/31, 33, 36/37, 38/39	Ruleboards for steam bath	39	Token coin	31
Disinfectant liquid	11, 29	Infrared cabin accessories	36/37	S		Towel racks	30
Door closers	20/21, 24/25	Infusion buckets	6/7	Sales stand	7	Transducer	14
Door handles	22/23	Infusion concentrates	8/9	Salt stones	15	Twin wires	33
Door hinges	18/19, 20/21	Infusion ladles	6/7	Salts for peeling	10	V	
Door sealings	25	Infusion pot	10	Sand timers	4, 39	Vaporiser sauna heater	32
Door signs	10, 31	Infusion signs	10/11	Sandals	29	Ventilation grille/slider/valve	14/15
Dousing shower buckets	26	Infusion stones	10	Sarongs	17	Ventilators	15
E		Interior lights	12/13	Sauna clocks	4	W	
Electric sauna heaters	32	Isolation foils	15	Sauna heaters electrical	32	Walking aids holder	30
Electrical cables	12, 33	K		Sauna heaters gas	34/35	Wall angle valves	27
Electrical control panels	33	Kids-sauna bathing procedure	31	Sauna heaters wood	32	Wall shelves	30
Evaporator sauna heater	32	Kilts	17	L		Warning signs	33, 38
Evaporator stones	10	Kneipp articles	27	Ladles	6/7	Water fittings	27
Exhaust air grille/slider/valve	14/15			LED-coloured-lights	13	Wood fuelled sauna heaters	32
				Light shades	12	Wooden buckets	6/7
				Lights for sauna	12/13	Wooden light shades	12
				Lights for steam bath	39		
				Literature	30		
				Locking latches	24/25		
				Loud speakers	14		
				Löyly ladles	6/7		
				M			
				Magnets	24/25		
				Massage brushes	31		
				Mats	17		
				Measuring devices for infrared cabins	36		
				Measuring devices for sauna	4/5		
				Menthol crystals	9		
				Moisture barriers	15		
				Moisture meters	5		
				MP3-radio	14		
				N			
				Neck pillows	16		
				O			
				Opener for canister	8		
				P			
				Peeling salts	10		
				Pillows	16		
				Plastic floor mats	17		
				Plastic insert for foot basins	28		
				Plastic insert for infusion buckets	6		
				Plunge basins	29		
				Point holding systems for glass	25		
				Presents	11		
				R			
				Racks	30		
				Radio	14		
				Roll closures	24		
				Room spray scents	9		
				Room thermometers	31		
				Ruleboards for infrared cabin	36		
				Ruleboards for sauna	30		
				Ruleboards for steam bath	39		
				S			
				Sales stand	7		
				Salt stones	15		
				Salts for peeling	10		
				Sand timers	4, 39		
				Sandals	29		
				Sarongs	17		
				Sauna clocks	4		
				Sauna heaters electrical	32		
				Sauna heaters gas	34/35		
				Sauna heaters wood	32		

Content

Page



Sand timers, clocks and measuring instruments
 Infusion buckets, -ladles and accessory sets

4 - 5
6 - 7



Infusion concentrates and sauna scents
 Infusion articles, skin care products
 and disinfectant

8 - 9
10 - 11



White- and colour-lights, light shades
 Audio, ventilation, isolation and salt stones
 Head- and back-rests, textiles and floor mats

12 - 13
14 - 15
16 - 17



Door hinges for glass doors
 Self-closing door hinges for glass and wooden doors,
 complete glass doors

18 - 19
20 - 21



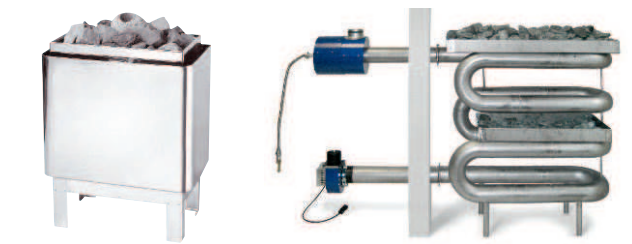
Door handles
 Door closers, sealings and fastenting technology
 for glass panes

22 - 23
24 - 25



Flood shower buckets/-showers and Kneipp hoses
 Foot basins, pool barrels and foot disinfectant
 Signs, shelves and sauna anteroom

26 - 27
28 - 29
30 - 31



Electric-/wood sauna heaters and accessories
 eliga gas-fuelled heaters for sauna and
 warm wair rooms

32 - 33
34 - 35



Infrared cabin accessories
 Steam bath technology and accessories

36 - 37
38 - 39

Sand timers – turnable casings made of wood with printed minute scale (registered design protection), glass cylinders filled with sand - duration tolerance +/- 2 minutes



running time 15 min.

with wooden bar across the glass cylinder and shapely rounded corners and edges
dim.: WxHxD approx. 60x320x35 mm
weight approx. 380 g

art. no. 833330 with red sand
art. no. 833340 with white sand
art. no. 833350 with blue sand
art. no. 833360 with green sand



running time 15 min.

dim.: WxHxD approx. 55x320x35 mm
weight approx. 320 g

art. no. 833020 with green sand
art. no. 833030 with blue sand
art. no. 833040 with white sand
art. no. 833045 with black sand **NEW**
art. no. 833050 with red sand



sand timers and measuring instruments with your single- or multicoloured company imprint/motif we can offer you starting from a quantity of 50 pcs.
art. no. 83379



running time 15 min.

dim.: WxHxD approx. 60x320x35 mm
weight approx. 380 g

art. no. 833105
glass cylinder with black sand and black printed turnable casing

art. no. 833106
glass cylinder with dark brown sand and dark brown printed turnable casing



running time 15 min.

art. no. 833100
turnable casing made of thermo-wood and glass cylinder with white sand
dim.: WxHxD approx. 60x320x35 mm
weight approx. 380 g



running time 15 min.

art. no. 833470
glass cylinder with red sand
dim.: WxHxD approx. 50x275x35 mm
weight approx. 260 g



for vital sauna and infrared cabin

glass cylinder with red sand
dim.: WxHxD approx. 55x320x35 mm
weight approx. 320 g

running time 20 min.
art. no. 83350

running time 30 min.
art. no. 83360



Glass cylinders for sand timers

15, 20 or 30 min. duration tolerance +/- 2 minutes, for your own production of sand timers
dim.: Ø approx. 22 mm
length approx. 270 mm
weight approx. 80 g

art. no. 33003 green, 15 min.
art. no. 33005 white, 15 min.
art. no. 33008 blue, 15 min.
art. no. 33010 dark brown, 15 min.
art. no. 33011 black, 15 min.
art. no. 33014 red, 15 min.
art. no. 33021 red, 20 min.
art. no. 33031 red, 30 min.



Sauna clocks electric

with maintenance-free special synchronic clock-mechanism 230 V/50 Hz, suitable for permanent temp. up to 120 °C, incl. 1 m silicone connection cable 2 x 0.75 mm²

round wooden casing
art. no. 8338

dim.: WxD approx. 210x50 mm
weight approx. 830 g

square wooden casing
art. no. 83385

dim.: WxHxD approx. 243x243x50 mm
weight approx. 800 g

and measuring instruments

measuring instruments 135 mm precision instruments with adjustable measuring mechanism, cover ring chrome-plated, scale silver coloured - sauna measuring ranges highlighted in colour, casing made of black plastic



art. no. 8301 Combined thermo-/hygrometer

art. no. 8316 Thermometer

art. no. 8326 Hygrometer

depth 32 mm
weight approx. 220 g



Combined thermo-/hygrometer with wooden frame 170 mm

art. no. 83016

art. no. 8301 with round wooden frame
weight approx. 310 g

art. no. 83018

art. no. 8301 with square wooden frame
weight approx. 460 g

art. no. 83015

art. no. 8301 with octagonal wooden frame
weight approx. 340 g



Thermometer with wooden frame 170 mm

art. no. 83153

art. no. 8316 with round wooden frame
weight approx. 310 g

art. no. 83155

art. no. 8316 with square wooden frame
weight approx. 460 g

art. no. 83136

art. no. 8316 with octagonal wooden frame
weight approx. 340 g



Hygrometer with wooden frame 170 mm

art. no. 83253

art. no. 8326 with round wooden frame
weight approx. 310 g

art. no. 83255

art. no. 8326 with square wooden frame
weight approx. 460 g

art. no. 83236

art. no. 8326 with octagonal wooden frame
weight approx. 340 g

measuring instruments 120 mm bimetal measuring devices with adjustable measuring mechanism, casing and scale white - sauna measuring ranges highlighted in colour



art. no. 83001 Combined thermo-/hygrometer

art. no. 83121 Thermometer

art. no. 83221 Hygrometer

depth 25 mm
weight approx. 140 g



measuring instruments with wooden frame 155 mm

depth 30 mm, weight approx. 280 g

art. no. 83013 Combined thermo-/hygrometer

art. no. 83001 with round wooden frame

art. no. 83125 Thermometer

art. no. 83121 with round wooden frame

art. no. 83225 Hygrometer

art. no. 83221 with round wooden frame



art. no. 83036 Combined thermo-/hygrometer for sauna

consisting of thermometer art. no. 83121 and hygrometer art. no. 83221 with square wooden frame
dim.: WxHxD approx. 300x155x28 mm
weight approx. 610 g



Combined thermo-/hygrometer sauna/vital/infrared

art. no. 83005 combined thermo-/hygrometer 120 mm

depth 25 mm, weight approx. 140 g

art. no. 83007 with wooden frame 155 mm

art. no. 83005 with round wooden frame
depth approx. 30 mm, weight approx. 280 g



Combined thermo-/hygrometer, precision instrument with adjustable measuring mechanism, casing and cover ring black, scale white - sauna measuring ranges highlighted in colour

Combined thermo-/hygrometer 135 mm

art. no. 8305

depth 32 mm, weight approx. 220 g

Combined thermo-/hygrometer with bright wooden frame 180 mm

art. no. 83053

depth 35 mm, weight approx. 510 g

Combined thermo-/hygrometer with frame made of thermo-wood 180 mm

art. no. 83057

depth 35 mm, weight approx. 530 g



Combined thermo-/hygrometer 135 mm with frame made of thermo-wood

art. no. 83020

precision instrument with adjustable measuring mechanism, scale white - sauna measuring ranges highlighted in colour, if desired the measuring instrument can also be glued in diagonal - please indicate when ordering

WxHxD approx. 180x375x30 mm
weight approx. 770 g



Combined thermo-/hygrometer 160 mm

art. no. 83086

precision instrument with adjustable measuring mechanism, casing and scale white - sauna measuring ranges highlighted in colour

depth 30 mm
weight approx. 360 g



Infusion bucket 5 l larch wood
art. no. 83752

with plastic insert art. no. 83731, for the commercial sauna use, wooden stripes with tongue and groove tied with 2 band-iron hoops

dim.: WxH approx. 240x195 mm (with handle approx. 300 mm)
weight approx. 1.7 kg

art. no. 83750

infusion bucket larch wood
art. no. 83752 without plastic insert



Infusion bucket 5 l conifer wood
art. no. 83710

with plastic insert art. no. 83735, for the private sauna, tied with 2 galvanized band-iron hoops

dim.: WxH approx. 240x195 mm (with handle approx. 300 mm)
weight approx. 1.1 kg



Infusion bucket 5 l wood turned design
art. no. 83781

with plastic insert art. no. 83735, only suitable for the private sauna

dim.: WxH approx. 240x195 mm (with handle 300 mm)
weight approx. 1.0 kg



Plastic insert

for the protection of the wood against water absorption and swelling - thereby no permanent water filling is necessary, good fitting into the bucket but still removable, suitable for permanent temp. up to 80 °C
dim.: WxH approx. 230x160 mm
weight approx. 135 g

art. no. 83735

suitable for infusion buckets 5 l
art. no. 83710 and 83781

art. no. 83731 NEW

suitable for infusion buckets 5 l
art. no. 83750 and 83752



Set infusion bucket 4 l and ladle
made of clear-sighted polycarbonate
art. no. 8377

exclusive design with handles made of heat treated aspen wood (colour deviations of the wood are possible), permanently heat-resistant up to 80 °C

dim. infusion bucket: WxH approx. 235x180 mm (with handle approx. 320 mm)
dim. ladle: length approx. 35 cm
bowl content approx. 150 ml
total weight approx. 845 g



Infusion bucket 4 l made of stainless steel
art. no. 83793

with wooden handle
dim.: WxH approx. 220x145 mm (with handle approx. 275 mm)
weight approx. 575 g

Ladle made of stainless steel
art. no. 83794

with wooden handle, length approx. 40 cm,
bowl content approx. 200 ml
weight approx. 110 g



Infusion bucket 4 l made of copper
art. no. 83791

with wooden handle, dim.: WxH approx. 225x155 mm (with handle approx. 340 mm)
weight approx. 510 g

Ladle with bowl made of copper
art. no. 837920 NEW

with wooden handle, length approx. 37 cm, bowl content approx. 200 ml
weight approx. 170 g



Infusion bucket approx. 4 l with black powder coating
art. no. 83796

bucket made of stainless steel with wooden handle, high-quality handle fixture which is only screwed on from the exterior - therefore no leaks

dim.: WxH approx. 215x150 mm (with handle approx. 310 mm), weight approx. 900 g

Ladle with black powder coating
art. no. 83797

with black wooden handle, length approx. 43 cm, bowl content approx. 350 ml
weight approx. 200 g



Infusion bucket 2 l conifer wood
art. no. 8376

with plastic insert, tied with 2 wooden hoops, for the private sauna, dim.: WxH approx. 190x160 mm (with handle approx. 240 mm)

weight approx. 535 g

Ladles made of wood, bowl content approx. 150 ml, with hanger loop



Ladle standard
length approx. 40 cm
art. no. 8360

weight approx. 160 g

length approx. 50 cm
art. no. 83610

weight approx. 170 g



Ladle with spout
length approx. 40 cm
art. no. 83661

with rounded handle
weight approx. 140 g



Ladle angled
length approx. 30 cm
art. no. 8362

weight approx. 75 g

length approx. 40 cm
art. no. 8363

weight approx. 100 g

Accessory sets with carry carton, dim.: WxHxD 300x330x290 mm



"Standard" 5-parts
art. no. 83670
 consisting of
 combined thermo-/hygrometer
 art. no. 83001,
 sand timer art. no. 833470,
 infusion bucket 5 l art. no. 83710,
 ladle art. no. 8360,
 rule board art. no. 83402
 weight approx. 2.0 kg



"Premium" 6-parts
art. no. 83681
 consisting of
 combined thermo-/hygrometer
 with round wooden frame art. no. 83013,
 sand timer art. no. 833050,
 infusion bucket 5 l art. no. 83781,
 ladle art. no. 8360,
 infusion concentrate eucalyptus
 100 ml art. no. 84310,
 rule board art. no. 83402
 weight approx. 2.5 kg



"Thermo-wood" 5-parts
art. no. 83689
 consisting of combined thermo-/
 hygrometer with frame made of ther-
 mo-wood art. no. 83057, sand timer
 art. no. 833100, infusion bucket 4 l
 and ladle made of clear-sighted poly-
 carbonate with wooden handles
 made of thermo-wood art. no. 8377,
 rule board laminated
 weight approx. 2.0 kg



"All-in" 9-parts
art. no. 83685
 consisting of combined thermo-/hygrometer
 with wooden frame art. no. 83013,
 sand timer art. no. 833330,
 infusion bucket 2 l art. no. 8376,
 ladle 30 cm art. no. 8362,
 infusion shelf with 4x100 ml infusion
 concentrates eucalyptus, mint, citrus,
 winter dream art. no. 84008,
 honey cream lavender 150 g art. no. 840003,
 box of menthol crystals 35 g art. no. 840005,
 sauna info book "Alles über Saunabaden"
 art. no. 8800 (alternatively with
 art. no. 8801 in English or art. no. 8802
 in French available),
 rule board art. no. 83402
 weight approx. 2.4 kg



"Black" 5-parts
art. no. 83683
 consisting of
 combined thermo-/hygrometer
 art. no. 8305,
 sand timer art. no. 833105,
 infusion bucket 5 l art. no. 83796,
 ladle art. no. 83797,
 rule board laminated
 weight approx. 1.8 kg

Content according to customer desires
art. no. 83675
 the content of the accessory set is put together
 individually according to your wishes



Ladle made of wood approx. 80 cm, bowl content approx. 900 ml
art. no. 83641
 hand-carved - every ladle is unique - variance in shape and dimensions are
 unavoidable! For the commercial infusion ceremony or for window display,
 suitable for infusion tub art. no. 8380
 weight approx. 880 g

Infusion tub approx. 17 l made of larch wood
art. no. 8380
 incl. plastic insert art. no. 83820 and carry chain made of stainless steel
 tied with 2 band-iron hoops
 dim.: WxH 400x200 mm (with handle 300 mm)
 weight approx. 3.9 kg

Display stand for sauna accessories
art. no. 89051
 design and equipping suggestion on request

Advertising label "Sauna-Zubehör"
art. no. 8816
 for shelf promotion and window display,
 4-coloured printed on self-adhesive foil
 dim.: 990x200 mm
 weight approx. 55 g





Sauna-infusion bags 100 % natural

Usage: use approx. 1 bag natural, dried plant material in tested food-safe quality each litre warm water and let them steep for approx. 5 minutes – for a 100 % natural sauna-infusion. The bag can be used several times when it's left to dry at the air after usage. Paper bag with 9 single bags each approx. 10 g dim.: WxHxD approx. 140x225x80 mm, weight approx. 135 g

82870 Birch leaves - for everyone who loves the typical Finnish birch scent but whom the handling with the birch bundles is too cumbersome.

82873 Lavender blossoms - balanced, relaxing fragrance

82876 winter magic - harmonising, creates Christmas spirit (cinnamon, orange peels, anise, clove)

82879 mixed set consisting of each 3 single bags approx. 10 g birch leaves, lavender blossoms and winter magic



Infusion shelves made of wood with various scents and sizes



Infusion starter set art. no. 84228

with 19 bottles each 30 ml, scent series art. nos. 842000-842290

dim.: WxHxD approx. 187x120x150 mm
weight approx. 1.5 kg



Infusion shelf for wall art. no. 84004

with 5 bottles each 30 ml in the scents: finn-special, mountain pine, eucalyptus, mint, citrus

dim.: WxHxD approx. 210x150x60 mm
weight approx. 300 g

Infusion shelf – scents according to customers' request

art. no. 840045

with 5 bottles each 30 ml



Infusion shelf for wall art. no. 84008

with 4 bottles each 100 ml in the scents: eucalyptus, mint, citrus, winter dream

dim.: WxHxD approx. 210x150x60 mm
weight approx. 600 g

Infusion shelf – scents according to customers' request

art. no. 840085

with 4 bottles each 100 ml



Drain tap art. no. 84964

for controlled filling of smaller units for our canisters 5 l with connection thread DIN 61, with ventilation
weight approx. 55 g

Opener art. no. 84966

for an easy opening of the screw caps for our canisters 5 l with connection thread DIN 61
weight approx. 40 g

Sauna infusion concentrate
Original Finnish pine tar
(wood-smoky scent), recommended dosage approx. 15-20 ml to 1 l of water

Content 30 ml
art. no. 842290
weight approx. 45 g

Content 100 ml
art. no. 84231
weight. approx. 115 g



Infusion concentrates art. no. 84010-84970

content 30/100/250/1000 ml in PET-bottles and canisters 5 l, produced with natural essential oils, dosage recommendation approx. 5-10 ml to 1 l water

sizes:	30 ml	100 ml	250 ml	1000 ml	5 l
weight approx.:	45 g	115 g	260 g	1 kg	5.3 kg
scents	art. no.	art. no.	art. no.	art. no.	art. no.
	NEW				
fir	842000	84010	84020	84040	84050
spruce	842010	84119	84120	84140	84150
mountain pine	842020	84210	84220	84240	84250
eucalyptus	842030	84310	84320	84340	84350
birch	842050	84510	84520	84540	84550
citrus	842060	84610	84620	84640	84650
mint	842160	84900	84910	84925	84928
orange	842070	84710	84720	84740	84750
finn-special (eucalyptus, mint, mountain pine, rosemary)	842170	84092	84820	84840	84850
lavender	842080	84810	84812	84814	84815
melissa	842090	84091	84072	84074	84075
green apple	842130	84051	84052	84054	84055
winter dream (cinnamon, orange, anise, clove)	842220	84096	84062	84064	84065
lemon grass	842210	84095	84076	84940	84950
alpine herbs	842240	84097	84098	84124	84125
grapefruit	842250	84131	84132	84134	84135
oriental (cedar wood, citrus, eucalyptus oil)	842260	84141	84142	84144	84145
anise-fennel	842270	84151	84152	84154	84155

other scents and sizes are available on request

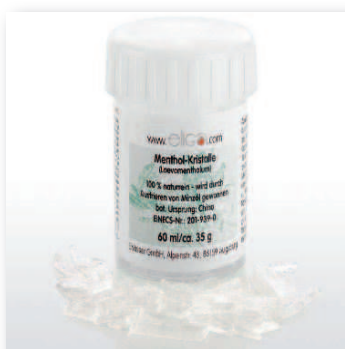
84015



Scent sprays 250 ml art. no. 82601-04

for scenting of dry and soft saunas (e. g. for sauna users, who do not like an infusion), infrared cabins, steam bath rooms as well as recreation rooms, made with natural essential oils, economical consumption – for an intensive scent development 1 push of the nozzle per m³ is enough, spray bottle made of plastic weight approx. 300 g

scents	effects and description of the scents	art. no.
eucalyptus	balancing, purifying, stimulating, cooling	82601
mint	freshening, clearing, purifying	82602
lemon grass	vitalising, lemon-like smell, distributes tiredness	82603
lavender/melissa	balancing, freshening, relaxing, inspiring	82604



Menthol crystals 100 % natural approx. 35 g art. no. 840005

place only a few menthol crystals between the hot sauna stones using the ladle or add them to the infusion water, that results in an intensive, long-lasting scent which refreshes and cools the breathing and the skin pleasantly; extracted through the freezing of mint oil, Chinese botanic origin (laevomentholum), bigger quantities are available on request



Fragrance herbs art. no. 82801-86

for scenting of vitality saunas (e. g. for sauna heaters with evaporator see page 32) and steam bath rooms. Carton with 20 vapor-permeable single bags each approx. 10 g filled with natural dried plant material in tested food-safe quality dim.: WxHxD approx. 187x120x150 mm, weight approx. 400 g

scents	effects and description of the scents	art. no.
eucalyptus	balancing, purifying, stimulating, cooling	82801
mint	freshening, clearing, purifying, antiphlogistic	82811
sage	vitalising, restorative, freshening	82816
birch	stabilising, encouraging, balancing, anticonvulsant	82826
NEW lavender blossoms	balancing, purifying, relaxing, promotes sleep	82836
NEW winter magic (cinnamon, orange peels, anise, clove)	harmonising, creates Christmas spirit	82838
chamomile	calming, relaxing, flowery	82841
meadow hay	flowery, freshening, balancing	82846
NEW mixed herbs	5 bags each mint, birch, winter magic, chamomile	82852
NEW mixed herbs	5 bags each eucalyptus, sage, lavender blossoms, meadow hay	82853
other herbs	are available on request	8286



Aroma infusion pot
art. no. 84988

continuously variable drop valve to install directly above the heater. The steady supply with water (if desired with scent) on the hot infusion stones results in a pleasant sauna climate with a constantly increased air humidity. Pot made of reddish grained ceramic, inside colourlessly varnished, delivery incl. 1 m chain and ceiling hook made of stainless steel
max. content 400 ml
dim. ceramic pot: Ø approx. 115 mm
height approx. 82 mm
weight approx. 550 g



Infusion stones approx. 10 kg in a carton
art. no. 83500

made of olivine diabase, up to fist-sized grains, extremely durable and robust. Need to be washed before first use. Recommendation: place larger stones underneath, smaller ones on top, depending on use the stones should be controlled and weathered ones replaced at least once a year
dim.: WxHxD approx. 245x205x200 mm

Infusion stones unpackaged
art. no. 83501

if interested please tell us your desired quantity



Special infusion stones

place between the infusion stones art. no. 83500 and douse with infusion water - creates a small follow-up infusion due to a delayed evaporation, natural stones - deviations in colour and size are unavoidable!

art. no. 8352 made of naturally shaped stone

therefore dimensions and weights vary greatly, with one drilled hole for approx. 60 - 100 ml

art. no. 8354 light-grey soapstone

with 4 water holes for altogether approx. 60 ml
dim.: LxWxH approx. 82x82x60 mm
weight approx. 900 g

art. no. 83550 made of polished, black soapstone

with one hole for approx. 35 ml
dim.: Ø approx. 80 mm, height approx. 60 mm
weight approx. 770 g



Sauna-infusion-automatic
art. no. 89870

quantity of the infusion concentrate (max. 12 ml/infusion), water amount (max. 190 ml/infusion) and the frequency of the infusion is adjustable by the customer. The ready-to-plug-in device for wall assembly is suitable for direct connection to the water conduit with a max. water pressure of 7 bar (a manual water shut-off valve and a return valve must be additionally installed by the customer), incl. temperature sensor for the prevention of infusion when the sauna heater is cold. Hose length 1.5 m for the connection to the infusion concentrate container and hose length 5 m for the connection to the sauna heater shower are included. Sauna heater shower is not included - please ask for the deliverable variants.

Connections: electr. 100-240 V/50-60 Hz, water intake 3/4"
dim.: WxHxD approx. 210x200x91 mm, weight approx. 1.3 kg



door sign "Aufguss - Bitte nicht eintreten!"

art. no. 84983

made of plastic, with cord to hang up on the door handle, design protection
dim.: LxWxH 250x250x1 mm
weight approx. 75 g



Honey creams 150 g

apply to the wet skin in sauna or steam bath room and let it soak in, wash off afterwards under the shower. Soft peeling effect through finely-ground apricot kernels, nourishes and moisturises the skin with natural pure blossom honey, propolis and beeswax from ecologically-farmed bee hives as well as with high quantities of pure essential oils, free from preservatives; thick consistency - so that it doesn't drip onto the sauna benches; larger quantities are available on request

art. no. 840003 Lavender

intense wild lavender and sweet orange scent

art. no. 840004 Finnish

with the natural scent of honey

art. no. 8400046 Icy fresh

with cooling effect - made with wild mint and Australian eucalyptus

art. no. 8400047 Wild rose

intense scent by precious wild rose oil



Gift sets

packed in an organza bag with wooden miniature weight approx. 460 g

art. no. 8400048 Gift set "Women"

consisting of honey cream lavender 150 g art. no. 840003, honey cream wild rose 150 g art. no. 8400047 and sauna infusion concentrate oriental 100 ml art. no. 84141

art. no. 8400049 Gift set "Men"

consisting of honey cream Finnish 150 g art. no. 840004, honey cream icy fresh 150 g art. no. 8400046 and sauna infusion concentrate finn-special 100 ml art. no. 84092



Shower and sauna salt 100 g

rub in the moist skin in sauna/shower, natural high-quality thermal-brine-salt from Germany, nourishes the skin and supports the blood flow and sweat formation, bigger portions are available upon request

art. no. 840001 Sauna salt natural

art. no. 840002 Sauna salt with menthol

Japanese style - creates a skin cooling effect in the sauna room



eliga-DES quick disinfectant and cleaning concentrate 250 ml

art. no. 84979

for sauna, steam bath and solarium. It is bactericidal, levurocidal and limited virucidal. At a mixture ration of 75 ml concentrate to 1 l water only 1 min. reaction time. Please note that the disinfectant concentrate is registered and licensed in Germany only - whether a registration outside of Germany is necessary must be checked by the importer himself. Use biocides safely - always read the label and product information before use!
Weight approx. 270 g



Printed sign made of plywood "Aufgüsse nur vom Personal"

art. no. 84985

with pre-drilled screw holes
dim.: WxHxD approx. 340x190x10 mm
weight approx. 330 g



Signs with text/motif acc. to customers' request burnt-in art. no. 8799

natural plate with bark WxHxD approx. 420x160x20 mm or approx. 250x110x12 mm or solid wood board WxHxD approx. 310x210x15 mm each without hanger, burnt-in text written in Arial (other fonts are available on request)



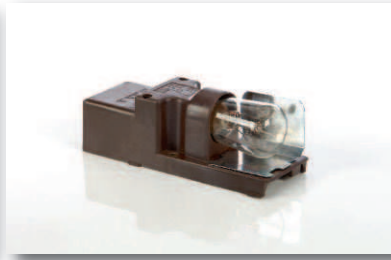
Light for sauna
art. no. 8522

max. permissible surrounding temp. 125 °C, IP54 water-protected, with frosted glass dome and ceramic screw base for LED-insert art. no. 85225 or light bulbs E 27 - at ceiling assembly up to max. 40 W (for halogen bulbs max. 28 W), voltage 230 V/50 Hz, suitable for light shades art. nos. 8524, 8527, 8528, 85290, 85295, 852960-63 and 85298
dim.: WxH approx. 110x140 mm
weight approx. 650 g



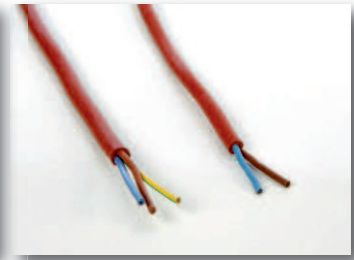
Light for sauna and steam bath
art. no. 82230

max. permissible surrounding temp. 125 °C, IP55 water-protected, with frosted glass dome and ceramic screw base for light bulbs E 14 - at ceiling assembly up to max. 40 W (for halogen bulbs max. 28 W), voltage 230 V/50 Hz, suitable for light shades art. nos. 8527, 8528, 85290, 85295 and 85298
dim.: WxHxD approx. 75x170x90 mm
weight approx. 900 g



Light socket brown
art. no. 85210

suitable for private sauna cabins - not for commercial use! Made of plastic with metal reflector, for bulb lamps (not included in delivery) with screw base E 14 up to max. 25 W (for halogen bulbs max. 18 W), voltage 230 V/50 Hz, with screwless double clamps (if required, strain relief for the silicone cables is available on request), suitable for light shades art. nos. 8523, 8524, 8527, 8528, 85290, 85295, 852960-63 and 85298
dim.: LxWxH approx. 115x40x40 mm
weight approx. 50 g



Silicone cables

heat-resistant up to 180 °C, for lights and air ventilation fans art. nos. 85903/85910

art. no. 85851 3 x 0.75 mm²
weight approx. 70 g/m

art. no. 85861 2 x 0.75 mm²
weight approx. 60 g/m



Light shades model „compact“

made of stable plywood, perfectly suitable for commercial use, suitable for light art. nos. 8522, 82230 or light socket art. no. 85210, weight approx. 800 g

art. no. 85290 for wall assembly
for hooking in 2 invisible metal hanger
dim.: WxHxD approx. 345x240x180 mm

art. no. 85295 for corner assembly
with 2 pre-drilled holes for concealed screwing
dim.: WxHxD approx. 310x240x170 mm



Light shades for sauna with printed, heat resistant plastic foil

baseplate made of plywood for mounting on the wall - trough suspension shackles the light shade can be screwed on firmly or only hooked in for a quick exchange of the light bulb without tools, suitable for light art. no. 8522 or light socket art. no. 85210

dim.: WxHxD approx. 160x195x165 mm
weight approx. 290 g

art. no. 852960 motif sunset

art. no. 852961 motif orchid

art. no. 852962 motif oriental

art. no. 852963 Your own motif - deliverable from 1 piece on

hereto we need only your printable picture with at least 300 dpi - suitable for the printable surface of WxH 400x195 mm



Light shade aluminum flocked

art. no. 85298

sight surface dark-brown flocked as touch guard, with stamped out stars, is delivered as sheet which can be locally fixed above the lights art. nos. 8522, 82230 or 85210 in the desired bend for wall or corner assembly, through suspension shackles the light shade can be screwed on firmly or only hooked in for a quick exchange of the light bulb without tools

dim.: WxHxD approx. 400x200x0.7 mm
weight approx. 120 g

Light shades art. nos. 8523-8528 wooden stripes fixed on plywood plate



Light shade small
art. no. 8523

suitable for light socket art. no. 85210
dim.: WxHxD approx. 190x230x140 mm
weight approx. 390 g

Light set small
art. no. 85250

light shade art. no. 8523 and light socket art. no. 85210, weight approx. 440 g



Light shade big
art. no. 8524

suitable for light art. no. 8522 or light socket art. no. 85210
dim.: WxHxD approx. 280x300x185 mm
weight approx. 750 g



Light shade oblong
art. no. 8527

suitable for light art. nos. 8522, 82230 or light socket art. no. 85210
dim.: WxHxD approx. 230x300x155 mm
weight approx. 700 g



Light shade for corner assembly
art. no. 8528

suitable for light art. nos. 8522, 82230 or light socket art. no. 85210
dim.: WxHxD approx. 230x310x230 mm
weight approx. 1.1 kg

light shades



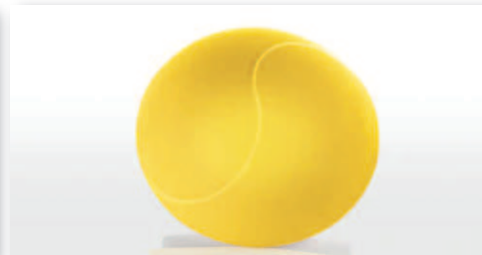
LED-coloured-light for sauna up to 110 °C
art. no. 71005

incl. touch-sensor-radio-remote control, control module and power supply 100-240 V~50-60 Hz, illumination approx. 4m²/light, power input 18 W, for ceiling or wall installation, frame made of alder wood with light surface made of heat-resistant plastic - the single LEDs are not visible. The dimmable single colours red, green, blue, violet, turquoise, yellow and white or a in an adjustable speed fluent colour sequence with smooth colour transitions are adjustable with the remote control, radio-remote control is suitable up to max. 40 °C
outer dim.: approx. 240x240x38 mm
light area dim.: approx. 180x180 mm
dim. remote control: approx. 114x55x23 mm
total weight approx. 1.75 kg



LED-coloured-light for steam bath and sauna
art. no. 71006

incl. radio-remote control and power supply 100-240 V~50-60 Hz, for cabins up to approx. 3.5x3.5 m, power input max. 34 W, LED-light suitable up to 125 °C cabin temperature, for ceiling or wall installation, light is made of heat-resistant plastic - the single LEDs are not visible. The dimmable single colours red, orange, yellow, green, turquoise, blue, violet and white or in an adjustable speed fluent colour sequence with smooth colour transitions are adjustable with the up to 125 °C usable remote control. Quality product Made in Europe
outer dim.: approx.: 335x240x35 mm
dim. remote control: approx. 70x30x15 mm
total weight approx. 1.5 kg



LED-coloured-light for infrared cabin and relaxation room
art. no. 71012

with covering dome made of matt-satinised glass and mounting plate made of white-coated sheet steel, suitable for surrounding temperature up to 60 °C. The single colours yellow, red, green, white, blue, orange, light green, ice-blue, bright-blue, pink and lilac or smooth colour run with time intervals 1, 2 or 4 min. are programmed according to customers' wish, for ceiling or wall installation, incl. control module and power supply 100-240 V~50-60 Hz
dim. light: Ø approx. 350 mm
height approx. 160 mm
total weight approx. 2.4 kg



LED-installation-light single coloured white 5.5 W for sauna up to 110 °C and bio-sauna
art. no. 71051

light made of natural wood with white glass insert Ø approx. 45 mm, light is embedded into the wall or ceiling except for the cover plate Ø approx. 100 mm height 9 mm, light body Ø approx. 65 mm depth approx. 95 mm, depth incl. lamp and socket approx. 130 mm - so it stands out over the wall/ceiling, incl. mounted lamp and ceramic socket with 5 m connection cable for 230 V/50 Hz, LED lamp with approx. 5.5 W power (approx. 5-fold brightness - equal to a traditional light bulb with approx. 25 W), the lamp may only be operated with an LED light source! Due to the long-lasting LED technology the effort for regular inspections and exchange of the light bulb and light shade is no longer required, due to the glare-free design a light shade can be avoided or designed small and shapely
weight approx. 350 g



LED-coloured-light projector 18 W with radio-remote control
art. no. 70082

the dimmable single colours red, green, blue, white, yellow, orange, bright-blue and lilac or colour sequence in different speeds are adjustable with the radio-remote control, noiseless operation because without fan, incl. power supply 100-240V~50-60 Hz, projector: max. ambient temperature 45 °C, dim.: WxHxD approx. 200x85x250 mm, total weight approx. 2.6 kg

Ready-made cable bundles made of glass- or plastic-fibre art. no. 7010

Single cables with different lengths and diameters can be combined individually on customer's request to receive a ready-made cable bundle. The cable bundles are delivered polished and with a pluggable connection piece for the light projector. Therefore, the installation is quick and easy.

Available glass-fibre cables with sheath

heat-resistant up to 120 °C for sauna, cable-Ø 1.1/1.3/1.5/1.8/2.2/4/3.3/4.3/5.0/6.0 mm

Available plastic-fibre cables with or without sheath

heat-resistant up to 85 °C for steam bath and infrared cabin, cable-Ø from 0.25 - 8 mm available - exact dimensions on request

End sleeves for glass- or plastic-fibre cables art. no. 7029

available in execution star effect, ball lens or light spot, overhead-Ø 15 mm, installation-Ø 10 mm, with gold-plated or chromed case available

Complete set with 40 light spots suitable for sauna cabins up to approx. 4 m²

art. no. 70095

consisting of: LED-coloured-light projector incl radio-remote control art. no. 70082 and ready-made cable bundle (glass-fibre Ø 1.5 mm with sheath, 20 cables each with length 2.0 m and 20 cables each with length 1.4 m)

We are glad to offer you a starry sky system according to your individual design wishes



White light LED-insert for sauna approx. 3 W with socket E27
art. no. 85225

suitable for light art. no. 8522, max. temperature 120 °C, power approx. 3 W (approx. 5-fold brightness - equal to a traditional light bulb with approx. 15 W), therefore energy and cost saving, incl. power supply (max. temperature 45 °C, 200-240 VAC/50 Hz and 12 VDC) - in the power supply the silicone cables for connecting the LED-insert in the sauna lamp with 12 V and the 230 V-power supply of the sauna control are connected, also suitable for installation in existing lights
dim. LED-insert: Ø approx. 60 mm, height approx. 60 mm
weight approx. 180 g



MP3-radio
art. no. 85950

IP44 water-protected control panel applicable in sauna and steam bath room up to max. temp. 90 °C for controlling the MP3-radio, with switching key between Bluetooth-, USB-, SD-, AUX-operation or radio, track or radio-channel selection, volume control, On/Off-switch; main unit for mounting outside the sauna/steam bath room, incl. plug-in power supply (100-240 V~50-60 Hz) and all connecting cables
dim. main unit: WxHxD approx. 120x40x74 mm
dim. control panel: WxHxD approx. 51x39x17 mm
weight approx. 970 g

Loudspeakers

for sauna, steam bath and infrared cabin, IP55 water-protected as well as salt water resistant, max. capacity 20 watt, 8 ohm, for stereo quality use 2 loudspeakers



Loudspeaker gold
up to max. 120 °C
art. no. 85960

cover screen: Ø 135 mm
cut out: Ø approx. 100 mm
depth approx. 46 mm
weight approx. 480 g



Loudspeaker white

cover screen: Ø 135 mm
cut out: Ø approx. 100 mm
depth approx. 46 mm
weight approx. 480 g

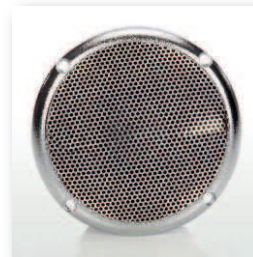
art. no. 85964
up to max. 120 °C

art. no. 85967
up to max. 70 °C



Loudspeaker black
up to max. 120 °C
art. no. 85970

cover screen: Ø 90 mm
cut out: Ø approx. 73 mm
depth approx. 37 mm
weight approx. 265 g



Loudspeaker silver
up to max. 120 °C
art. no. 85975

cover screen: Ø 90 mm
cut out: Ø approx. 73 mm
depth approx. 37 mm
weight approx. 265 g



Transducer 20 watt
art. no. 85977

uses surfaces capable of vibrating (e. g. wooden walls) for music and speech reproduction, is screwed from the outside of cabin wall/ ceiling, incl. 5 m connection cable with flat pins for connection to the audio system, IP68 water-protected, 8 ohm, dim.: Ø 60 mm, height 36 mm incl. mounting plate weight approx. 285 g

Sauna air supply and ventilation



Wooden ventilation slider
art. no. 85701

with moveable slider
max. ventilation section 165x70 mm
dim.: WxH 390x130 mm
weight approx. 230 g



Wooden ventilation grille

big for approx. air inlet of about 100 cm²
art. no. 85733

installation dim.: WxHxD approx. 295x105x9 mm
exterior dim.: WxHxD approx. 315x130x17 mm
weight approx. 275 g

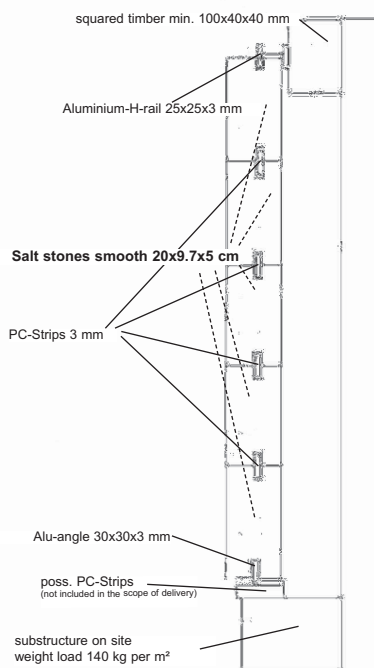
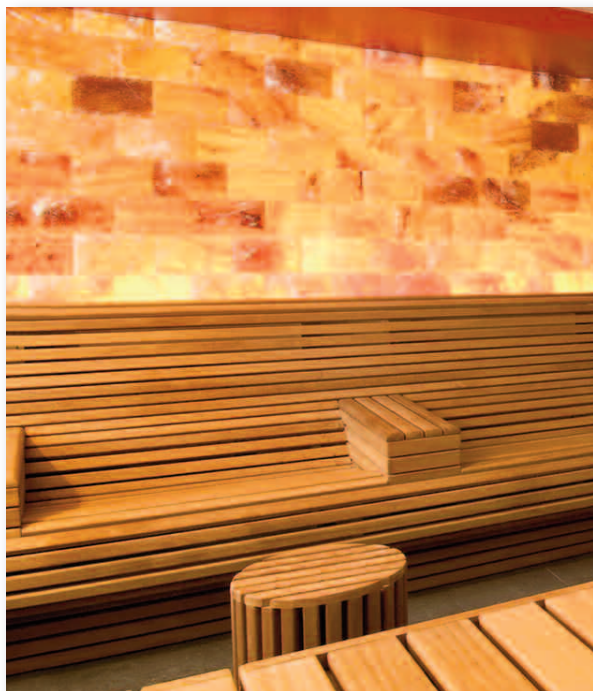
small for approx. air inlet of about 40 cm²
art. no. 85741

installation dim.: WxHxD approx. 115x106x10 mm
exterior dim.: WxHxD approx. 140x130x18 mm
weight approx. 115 g



Wooden ventilation grille round
art. no. 85720

with obliquely inserted wood strips to prevent seeing through, for an air inlet of approx. 45 cm²
installation dim.: Ø approx. 124 mm (suitable holesaw attachment Ø 127 mm is available on request), depth approx. 13 mm, exterior dim.: Ø approx. 139 mm, depth approx. 19 mm
weight approx. 70 g



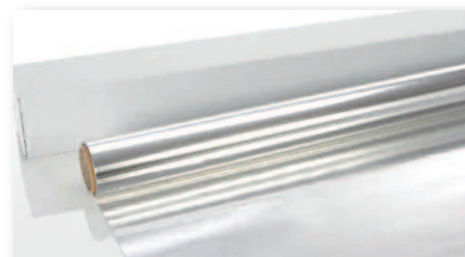
**Salt stones approx. 20x9.7x5 cm
art. no. 8530**

with a smooth visible side; with a groove on the long side for an invisible, easy and quick assembly without any bonding (registered design protection) - ideal for backlighting; incl. complete fastening material with transparent PC strips and aluminium rails, usable up to 120 °C and max. 40 % relative humidity, country of origin Pakistan. Please note that if we have to cut the salt stones to half length or if you require special sizes formatting costs occur for cutting the salt stones. Please send us your drawing - we will be pleased to send you an offer. Salt enriches the air with negative ions and valuable minerals and creates a low in dust, emission and allergens micro-climate. It stimulates the well-being and increases the physical and intellectual performance. For intensification of the salt effect a nebuliser of a brine solution can be used - if you are interested, please ask for more information
weight approx. 120 kg/m²

**Salt stones in other options
art. no. 85301**

natural surfaces, salt stones in white colour, without a groove on the long side or corner and wall connection stones are available on request

Aluminium foil with a width of 1 m
through the usage of the vapour barrier wall and ceiling are reliably protected against moisture penetration, thickness 0.03 mm
art. no. 8540 roll length 25 m, weight approx. 2.4 kg
art. no. 8542 roll length 100 m, weight approx. 9.1 kg



**Aluminium self-adhesive tape with a length of 100 m
art. no. 85453**

temperature resistant from -40 °C up to +130 °C, for gluing of vapour blocking aluminium foils art. nos. 8540/42, adhesive force 35 N/35 mm, thickness 0.03 mm, roll width 50 mm weight approx. 1 kg

**Aluminium self-adhesive tape with a length of 50 m
art. no. 85440**

temperature resistant up to 80 °C, flammability classification B1, for gluing of vapour blocking aluminium foils art. nos. 8540/8542, adhesive force 16 N/25 mm, thickness 0.03 mm, roll width 50 mm weight approx. 350 g

Sauna air supply and ventilation



**Ventilation valve with wooden cover
art. no. 85711**

air inlet is adjustable via screw length 38 mm, with colour-coated metal frame that can easily be screwed on interior dim. approx. 90 mm exterior dim. approx. 125 mm weight approx. 215 g



**Ventilation fan IP55 water-protected
art. no. 85903**

for commercial saunas with a room size up to approx. 16 m³ - air performance: approx. 160 m³/h, for larger cabins it is necessary to install additional parallel-connected fans, suitable finguard grille and plug connection cable are available on request, with ball bearing, permissible ambient temperature: -10 °C up to +70 °C, 230 V/50 Hz, 22 W, WxHxD 120x120x38 mm weight approx. 550 g

Ventilation fan IP67 water-protected for steam bath is available on request



**Pipe inserted ventilation fan for pipes Ø 125 mm
art. no. 85910**

for commercial saunas with a room size up to approx. 25 m³ - air performance approx. 245 m³/h, IPX4 water-protected, permissible ambient temperature: 0 °C up to +45 °C, max. temperature of air flow +60 °C, 220-240 V/50 Hz, 22 W length approx. 118 mm weight approx. 0.5 kg

Pipe inserted ventilation fan for pipes Ø 100/150 mm are available on request

Head- or foot-rests made of natural wood

**for commercial sauna**

shapely and stable design, glued with heat resistant paste
dim.: WxHxD approx. 390x360x110 mm
weight approx. 1.6 kg

art. no. 85642 made of bright wood

art. no. 85643 made of thermo-wood

**for private sauna**

art. no. 8565

with metal nails countersunk from the reverse side
dim.: WxHxD approx. 400x310x85 mm
weight approx. 1.1 kg

**NEW****with spring wire**

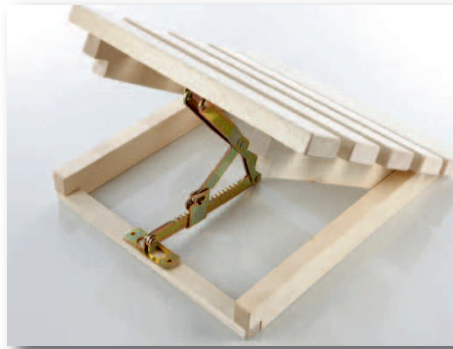
art. no. 85669

wooden strips are connected with spring wire and thus they adapt flexibly to the respective head shape
dim.: WxHxD approx. 350x360x100 mm
weight approx. 1.3 kg

**adjustable tilt angle**

art. no. 85662

the tilt of the lying surface is continuously adjustable with the wooden stick for inserting
dim.: WxD approx. 400x370 mm
weight approx. 1.7 kg

**Adjustment hinge for tilt angle**

art. no. 85690

for height adjustment of head- and foot-rests, sauna benches, recliners etc., solid construction made of brass-plated metal, easy to assemble, with 18 adjustable tilt angles, height max. 300 mm, base length 210 mm, base height 37 mm
weight approx. 400 g

**Sauna pillow**

for a relaxed head resting, pillow-case outside made of white cotton/terry towelling with velcro-fastener - inside PVC/Polyester-coated - therefore sweat-impermeable, pillow case washable up to 95 °C, inside-pillow filled with foam flakes

art. no. 8657 Sauna pillow large

dim.: WxH approx. 400x350 mm, weight approx. 500 g

art. no. 8658 Sauna neck pillow

dim.: WxH approx. 300x200 mm, weight approx. 200 g

**Back rest**

two-sided ergonomically formed wooden back rest for relaxed and comfortable sitting, the position is individually variable via slip-proof cork stoppers, rods Ø 20 mm, side plate thickness: 15 mm, height approx. 50.5 cm

art. no. 85680 width: approx. 41.5 cm

weight approx. 1.4 kg

art. no. 85681 width: approx. 37.5 cm

weight approx. 1.3 kg

Back rest with terry towelling cover

art. no. 85686

back rest art. no. 85680 with removable terry towelling cover, outside made of white cotton/terry towelling - inside PVC/Polyester-coated - therefore sweat-impermeable, cover washable up to 95 °C, weight approx. 1.7 kg

**Patent protection!****ELIGA-Spring elements for the installation in sauna benches, head- and back-rests and seating and rest furniture**

for comfortable lying and sitting due to a flexible adaption of the single wooden stripes to the individual body- and head-shapes. Closed casing made of plastic with a spring made of stainless steel, initial spring pressure is adjustable by the builder, temperature resistant -20 °C up to +130 °C, patent granted in Europe
dim.: HxW approx. 105x20 mm, mounting plate approx. 50x20 mm
weight approx. 35 g/piece, 10 pcs. per packet

art. no. 85673 spring compression approx. 80 N (= about 8 kg)

art. no. 85677 spring compression approx. 110 N (= about 11 kg), suitable for example for assembly in seating furniture



Sitting mat/lying towel white

for sauna, infrared cabin, steam bath and swimming pool, material: top side cotton/terry towelling back side PVC/Polyester-coated; hemmed border, material is particularly hygienic - as it is water and sweat-impermeable, washable up to 95 °C

art. no. 8255 Sitting mat

dim.: WxH 50 x 40 cm, weight approx. 105 g

art. no. 8649 Lying towel

dim.: WxH 75 x 180 cm, weight approx. 700 g



Sauna kilt white

made of 100% cotton, with outside pocket, waistband approx. 60-120 cm with elastic band and velcro-fastener

art. no. 86521 for women - length approx. 80 cm
weight approx. 470 g

art. no. 86511 for men - length approx. 50 cm
weight approx. 355 g



NEW

floor mat made of thermo-wood 60 x 80 cm

art. no. 85510

single wooden stripes about 45 mm wide and 15 mm thick connected with a flexible rubber band - this is also a spacer for the wooden stripes to the ground, length 80 cm can be easily shortened by cutting the rubber band, rollable for cleaning
weight approx. 6.3 kg



NEW

Floor mats 20 x 20 cm

made of pleasant to walk PVC-plastic, suitable for sauna, shower, steam bath and swimming pool, easy and quick combination of single mats to every size via a pressure-hook-system, easy to cut, meets the requirements of slide inhibiting for the highest field of application (=quality level C) according to DIN 51097, lets water drain away easily, antibacterial and mould repellent, UV-steady, rollable for cleaning, permissible temperature: -35 °C up to +70 °C, height 9 mm, weight approx. 165 g

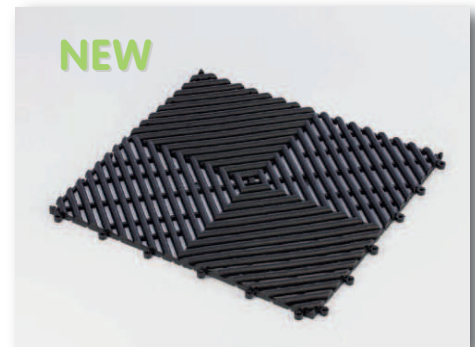
art. no. 8549 colour dark brown

art. no. 85490 colour beige **NEW**

art. no. 85495 colour anthracite-grey

art. no. 85498 colour light grey

art. no. 8559 other colours (white, black, pink, olive-green, bright- and dark-blue) are available on request



NEW

floor mat black 30.4 x 30.4 cm

art. no. 85500

made of pleasant to walk PVC-plastic, suitable for sauna, shower, steam bath and swimming pool, easy and quick combination of single mats to every size via a pressure-hook-system, easy to cut, meets the requirements of slide inhibiting for the highest field of application (=quality level C) according to DIN 51097, lets water drain away easily, antibacterial and mould repellent, UV-steady, rollable for cleaning, permissible temperature: -20 °C up to +70 °C, height 10 mm, weight approx. 450 g

art. no. 8559 other colours (white, pink, olive-green, cream, dark-brown, anthracite-grey, bright- and dark-blue) are available on request



Floor mat width 58 cm in rolls

made of pleasant to walk PE/EVA-plastic, suitable for sauna, shower, steam bath and swimming pool, complete roll with 16 m - every required partial length is available without additional costs, each element has a length of about 10 cm and can be connected to any length required without cutting, width 58 cm - with connectors art. no. 85485 the width is extendable for bigger floor areas, meets the requirements of slide inhibiting for the highest field of application (=quality level C) according to DIN 51097, lets water drain away easily, antibacterial and mould repellent, UV-steady, rollable for cleaning permissible temperature -35 °C up to +70 °C, height 9 mm weight approx. 2.2 kg/m²

art. no. 85480 colour beige

art. no. 85481 colour dark blue

art. no. 85482 colour graphite grey

art. no. 8559 other colours (bright-green, black, olive-green, cream, bright-blue) are available on request

Connectors art. no. 85485

for the widening of the floor mats in rolls art. nos. 85480-82, approx. 2 pcs. per 10 cm is necessary, made of opaque plastic weight approx. 1 g/pc., 10 pcs. per packet

eliga door hinges for glass doors

- height and side adjustment of the glass door pane with 2.25 - 4.5 mm depending on the fitting position of the eccentric is possible (see drawing)
- silent, maintenance-free plastic plain bearing
- aperture angle 180°
- door hinge made of corrosion-free zinc die-casting
- stainless steel turning pin and screws



	art. no.	design	fastening in rabbet	surface	remarks	glass bore holes 20 mm	load-bearing capacity	dim. mm WxH	weight approx.
1	85147 85148	Tongue form* for private and commercial facilities	2 drill-in threaded pins M8x40 DIN left or right	high-polished chrome matt-chrome	for glass pane inside in door frame	2 pieces (dimension sheet on request)	25 kg/piece	130x77	540 g
2	85150	Tongue form* for private and commercial facilities	screw-on band in the door rabbet DIN left or right	matt-chrome	for glass pane inside in door frame	2 pieces (dimension sheet on request)	25 kg/piece	130x125	700 g
3	85152 85157 85158 85162	Modern Art* for private facilities	2 drill-in threaded pins M8x40 DIN left or right	brown high-polished chrome matt-chrome white	for glass pane straight with door frame	1 piece (dimension sheet on request)	20 kg/piece thickness of glass door max. 8 mm and door width max. 70 cm	70x65	280 g
4	85165 85167 85168		with screw-on band 85x15 mm DIN left or right	brown high-polished chrome matt-chrome	for glass pane straight with door frame	1 piece (dimension sheet on request)		70x85	285 g
5	85179 85180 85181 85183	Angled form* for private and commercial facilities	2 drill-in threaded pins M8x40 DIN left or right	matt-chrome brown white high-polished chrome	for glass pane inside in door frame	2 pieces (dimension sheet on request)	25 kg/piece	95x75	520 g
6	85187 85188	Long form* for private facilities	screw-on band in the door rabbet DIN left or right	matt-chrome brown	for glass pane inside in door frame	2 pieces (dimension sheet on request)	25 kg/piece glass door width max. 85 cm	130x105	500 g
7	85189	Long form* for private facilities	drive-in threaded pins 35 mm DIN left or right	high-polished chrome	for glass pane inside in door frame	2 pieces (dimension sheet on request)	25 kg/piece glass door width max. 85 cm	130x64	420 g
8	85191 85192 85193 85194		2 drill-in threaded pins M8x40 DIN left or right	brown white high-polished chrome matt-chrome	for glass pane inside in door frame	2 pieces (dimension sheet on request)		130x58	400 g
9	85196 85198 85199		with screw-on band 85x15 mm DIN left or right	brown high-polished chrome matt-chrome	for glass pane inside in door frame	2 pieces (dimension sheet on request)		130x85	410 g

*accessory kit: adjustable eccentric, fastening screws, cover caps big/small and protective sleeves will be supplied in the requested quantity

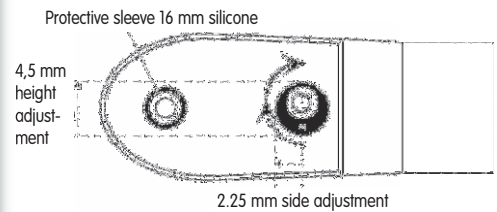
The load-bearing capacity in reference to the chart doubles when using two door hinges. By using a third hinge the load-bearing capacity increases by a further 25 %. These values apply for doors with a normal width of up to 90 cm and a height of 200 cm, unless otherwise noted. If desired, we are able to produce surface coatings in every colour according to the RAL-colour chart. All our door hinges are delivered for glass doors 8 mm thick. Please inform us if you will use other glass thicknesses (6/10 mm) then we will deliver adapted accessory kits according to your order. For usage in saline environment air you need special door hinges - please contact us in this case!



Examples of application for adjustable eccentric:



Installation of the adjustable eccentric:

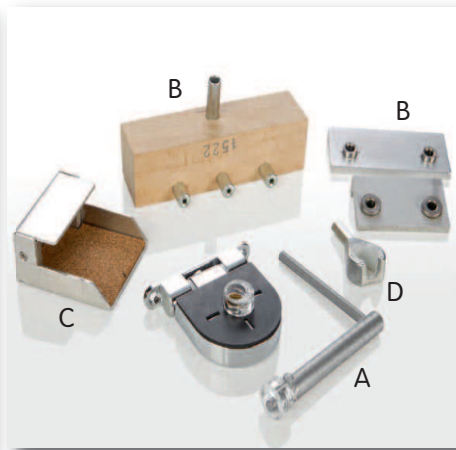


Individual print with your motif/company-imprint is possible on all of our door hinges - we look forward to your inquiry.



Assistance tools

these tools will simplify your precise installation of our door hinges:



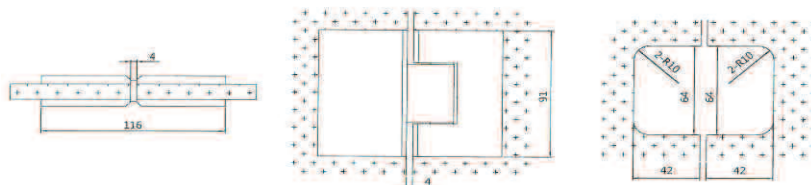
- A Special tool art. no. 35079**
for an easy and exact adjustment of the eccentrics suitable for all eliga glass door hinges
- B Drill template**
 - art. no. 36009** suitable for door hinges art. nos. 85147-85148
 - art. no. 36010** suitable for door hinge art. no. 85176
 - art. no. 36011** suitable for door hinges art. nos. 85171-85172
 - art. no. 36012** suitable for door hinges art. nos. 85152-85162
 - art. no. 36013** suitable for door hinges art. nos. 85179-85183
 - art. no. 36014** suitable for door hinges art. nos. 85189 and 852090/91
 - art. no. 36015** suitable for door hinges art. nos. 85191-85194
- C Fixing aid art. no. 36016** suitable for door hinges art. nos. 85152-85168
- D Screw-in/drive-in device art. no. 36017**
suitable for all drill-in and drive-in threaded pins

NEW



Swing door hinge 180° for glass-to-glass-doors
art. no. 852000

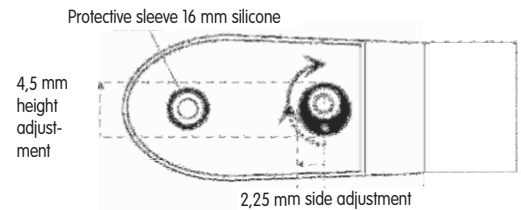
with adjustable zero position, using a special heat-resistant insert of mineral fibers the adjustment to glass door thicknesses of 6-10 mm is possible, made of matt-chromed brass (high-polished chrome and satin-nickel are available on request), optically high-quality design because only the cover plates are fixed with small grub screws otherwise no other screws are visible, carrying capacity 40 kg per pair weight approx. 1.2 kg



Self-closing eliga door hinges

- self-closing within an opening range of 0° - approx. 140° (or 0° - approx. 85° on request)
- static within a range of approx. 140° - 180° (or approx. 85° - 180° on request)
- warmth- and energy-saving - no more open doors because of careless users!
- patented in Europe
- glass pane can be fitted floor-flushed as it will be slightly lifted through the opening movement
- fastening with screw-on band in the door rabbet
- height and side adjustment of the glass door with 2.25 - 4.5 mm depending on the fitting position of the eccentric (see drawing)
- glass door hinge made of corrosion-free zinc die-casting, stainless steel turning pin and screws
- with glass door thickness (6/10 mm) or for usage in saline environment air you need special door hinges – please contact us in advance!
- if desired, we are able to offer surface coatings in every colour according to the RAL-colour chart

Installation of the adjustable eccentric:



Self-closing eliga door hinges for glass doors

art. no.	design	fastening in rabbet	surface	remarks	glass bore holes 20 mm	dim. glass door max. WxH mm	dim. door hinge WxH mm	weight approx.
1 852034 852035	Tongue form* for private and commercial facilities	DIN left DIN right	matt-chrome matt-chrome	for glass panes inside in door frame	2 pieces (dimension sheet on request)	2000x900x8	130x125	720 g
2 852040 852041 852044 852045	Modern Art* for private facilities	DIN left DIN right DIN left DIN right	brown brown matt-chrome matt-chrome	for glass panes straight with door frame	1 piece (dimension sheet on request)	1800x700x8	70x105	420 g
3 852054 852055	Angled form* for private and commercial facilities	DIN left DIN right	matt-chrome matt-chrome	for glass panes inside in door frame	2 pieces (dimension sheet on request)	2000x900x8	95x125	700 g
4 852060 852061 852064 852065	Long form* for private facilities	DIN left DIN right DIN left DIN right	brown brown matt-chrome matt-chrome	for glass panes inside in door frame	2 pieces (dimension sheet on request)	1800x850x8	130x105	540 g

*accessory kit: adjustable eccentric, fastening screws, cover caps big/small and protective sleeves will be supplied in the requested quantity

Glass doors and frames

Glass doors and frames

art. no. 852099

we offer you glass doors itself or complete with door rabbet made of wood or aluminium incl. door hinges, handles, fastenings and sealing acc. to your choice



Door hinges for wooden doors

Tools and drill templates for a precise installation can be found on page 19



Self-closing door hinges for wooden doors

complete pre-assembled for screwing in the door frame rabbet with screw-on band length 125 mm as well as a rotary hinge with 2 drill-in threaded pins M7x50 mm for fastening in the wooden door pane, surface matt-chrome suitable for max. door dim. HxW 2000x900 mm weight approx. 300 g

DIN left
art. no. 852090

DIN right
art. no. 852091

Standard door hinges for wooden doors

complete pre-assembled with 1 drill-in thread pin M8x50 mm for fixing in the wooden door pane as well as turning bolt made of stainless steel fixed in a silent and maintenance-free plastic plain bearing, incl. 2 cover caps, opening aperture angle 180°, total height 60 mm, load-bearing capacity 20 kg/piece, weight approx. 120 g



Door hinge for drill-in

2 drill-in threaded pins M8x40 mm for the fixture at the door frame

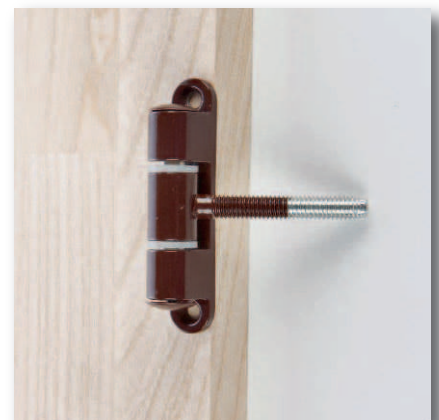
colour brown
art. no. 85171

colour white
art. no. 85172

Door hinge brown with screw-on band

art. no. 85176

with screw-on band made of zinc die-casting dim.: 85x15 mm with 3 fastening drill holes for the fixture at the door frame





Door handles Ø 32 mm, length 400 mm

drill hole spacing 200 mm tolerance +/- 1 mm, incl. invisible M6 screwing
height approx. 77 mm

**made of high-polished stainless steel
art. no. 85127**

suitable for sauna doors for wooden door handles art. nos. 85129 and 851295 as well as for steam bath doors for stainless steel handles art. nos. 85127 and 85128
weight approx. 325 g

**made of stainless steel
art. no. 85128**

suitable for sauna doors for wooden door handles art. nos. 85129 and 851295 as well as for steam bath doors for stainless steel handles art. nos. 85128 and 85127
weight approx. 325 g

**made of natural bright wood
art. no. 85129**

suitable for door handles stainless steel art. nos. 85127 and 85128 as well as for wooden door handles art. nos. 851292 and 851297
weight approx. 245 g

**made of thermo-wood
art. no. 851295**

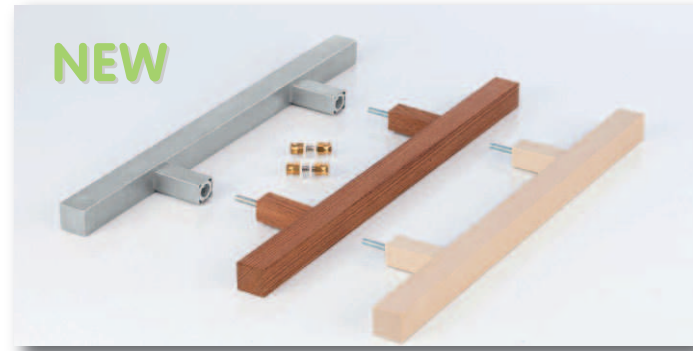
suitable for door handles stainless steel art. nos. 85127 and 85128 as well as for wooden door handles art. nos. 851292 and 851297
weight approx. 245 g

**made of natural bright wood
art. no. 851292**

suitable for wooden door handles art. nos. 85129 and 851295
weight approx. 245 g

**made of thermo-wood
art. no. 851297**

suitable for wooden door handles art. nos. 851295 and 85129
weight approx. 245 g



door handles square 25x25 mm, length 400 mm

drill hole spacing 200 mm tolerance +/- 1 mm, incl. invisible M6 screwing
height approx. 70 mm

**made of stainless steel with satin finish
art. no. 85133**

suitable for sauna doors for wooden door handles art. nos. 851340 and 851345 as well as for steam bath doors with an order of 2 pcs. as a door handle set, colour fits well with our door hinges with matt-chrome finish
weight approx. 520 g

**made of natural bright wood
art. no. 851340**

suitable for door handle stainless steel art. no. 85133
weight approx. 190 g

**made of thermo-wood
art. no. 851345**

suitable for door handle stainless steel art. no. 85133
weight approx. 190 g



Door handles Ø 22 mm, length 300 mm

drill hole spacing 200 mm tolerance +/- 1 mm
height approx. 65 mm

**made of high-polished stainless steel
art. no. 85130**

suitable for wooden door handle art. no. 85131, with M6 thread
weight approx. 250 g

**made of natural bright wood
art. no. 85131**

suitable for door handle stainless steel art. no. 85130, with 2 wooden covering caps
weight approx. 100 g

**Door handle set stainless steel/wood for sauna glass doors thickness 6 - 10 mm
art. no. 851410**

consisting of door handle stainless steel art no. 85130 and wooden door handle art. no. 85131 as well as 2 stainless steel screws for an easy screwing of the handles together through the glass pane
weight approx. 360 g

**Door handle set wood/wood for sauna glass doors thickness 6 - 10 mm
art. no. 851412**

consisting of 2 wooden door handles art. no. 85131 as well as threaded bolts art. no. 85121 (set = 2 pcs.) for screwing through the glass pane
weight approx. 210 g



**Door handles special designs
art. no. 851299**

door handles made of metal or wood we offer you in special lengths and designs according to your individual wishes

Door knob sets for glass doors thickness 6 - 12 mm

consisting of 2 door knobs incl. threaded bolt M6x30 mm, dim.: wooden door knob: WxH approx. 55x60 mm, dim. glass door knob: WxH approx. 50x65 mm



art. no. 85102 for sauna glass doors

door knob interior and exterior made of natural wood with screwed-in metal threaded sleeve
weight approx. 135 g



art. no. 85103 for sauna glass doors

exterior door knob made of frosted glass with stainless steel base, interior door knob made of natural wood with screwed-in metal threaded sleeve
weight approx. 415 g



art. no. 85104 for steam bath glass doors

interior and exterior door knob made of frosted glass with stainless steel base, max. working temperature 60 °C
weight approx. 560 g



Door handle for the interior and exterior made of natural wood

art. no. 8514

drill hole spacing 200 mm tolerance +/- 1 mm, with 2 wooden covering caps
dim.: LxWxH approx. 270x35x54 mm
weight approx. 160 g

Door handle set for sauna glass doors thickness 6 - 10 mm

art. no. 85144

consisting of 2 door handles art. no. 8514 as well as threaded bolts art. no. 85121 (set = 2 pcs.) for an easy screwing of the handles together through the glass door
weight approx. 340 g



Door handle for the exterior made of natural wood

art. no. 85135

incl. door magnet art. no. 8507 with magnetic force approx. 160 N (16 kg) and threaded sleeve art. no. 85040 for an easy manual adjustment of the magnetic force, incl. round adhesion sheet Ø 24x1.5 mm; drill hole spacing 190 mm tolerance +/- 1 mm, with 2 wooden covering caps
dim.: LxWxH approx. 285x35x52 mm
weight approx. 330 g

Door handle for the interior and exterior made of natural wood

art. no. 85136

suitable for art. nos. 85135 and 85101
dim.: LxWxH approx. 240x35x52 mm
weight approx. 220 g

Door handle set for sauna glass doors thickness 6 - 10 mm

art. no. 85142

consisting of wooden door handles art. nos. 85135 and 85136 as well as threaded bolts art. no. 85121 (set = 2 pcs.) for an easy screwing of the handles together through the glass door
weight approx. 570 g



Door handle for the exterior made of natural beech wood

art. no. 85101

angled side as pressure point for roll closures art. nos. 85005-85018, drill hole spacing 190 mm tolerance +/- 1 mm, with 2 wooden covering caps
dim.: LxWxH approx. 270x35x52 mm
weight approx. 250 g

Door handle for the interior and exterior made of natural wood

art. no. 85136

suitable for art. nos. 85101 and 85135
dim.: LxWxH approx. 240x35x52 mm
weight approx. 220 g

Door handle set for sauna glass doors thickness 6 - 10 mm

art. no. 85143

suitable for roll closures art. nos. 85005-85018, consisting of art. nos. 85101 and 85136 as well as threaded bolts art. no. 85121 (set = 2 pcs.) for an easy screwing of the handles together through the glass door
weight approx. 490 g



Door handles with your company name/motif

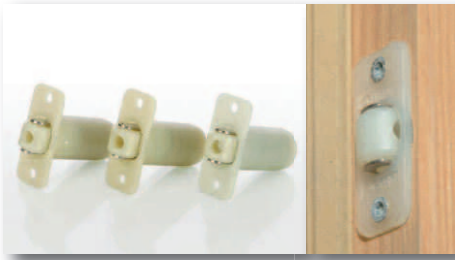
our door handles made of stainless steel or wood we offer you with your engraved or branded motif



Threaded bolts set suitable for door handles for glass doors

art. no. 85121

threaded bolts M6x30 mm with nickel-plated cap nuts (set = 2 pcs.), for an easy screwing of the handles together through the glass door, suitable for handles art. nos. 85101, 85131, 85135, 85136 and 8514
weight approx. 20 g



Roller catches for glass doors

with height-adjustable closing roller (the height of the roll must be adjusted to the glass door during the fitting so that the door can be opened and closed easily), roll and casing are made of durable and silent special plastic - suitable for permanent temperature up to 120 °C, all metal parts are made of stainless steel so they are also ideal for steam bath doors, needed drill hole Ø 16 mm - drill depth 30 mm, screw-on plate dim.: approx. WxHxD 35x16x2 mm weight approx. 10 g

art. no. 85090 roller catch approx. 30 N (3 kg spring closing pressure) for glass doors use 2 pcs.

art. no. 85095 roller catch approx. 60 N (6 kg spring closing pressure) for glass doors 1 pc. is sufficient

art. no. 85096 roller catch approx. 90 N (9 kg spring closing pressure) for glass doors 1 pc. is sufficient

Roller catches for wooden doors incl. locking latch

locking latch made of zinc die-casting, dim.: WxHxD approx. 45x20x8 mm weight approx. 30 g

art. no. 85097 spring closing pressure approx. 30 N

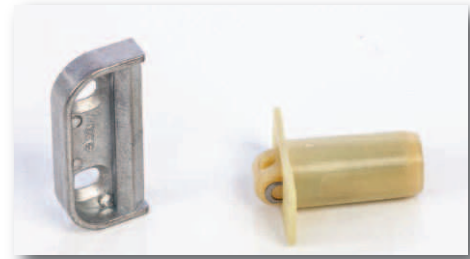
consisting of roller catch art. no. 85090 and locking latch, for wooden doors use 2 pcs.

art. no. 85098 spring closing pressure approx. 60 N

consisting of roller catch art. no. 85095 and locking latch, for wooden doors use 2 pcs.

art. no. 85099 spring closing pressure approx. 90 N

consisting of roller catch art. no. 85096 and locking latch, for wooden doors 1 pc. is sufficient



Roll closure

made of zinc die-casting, spring closing pressure approx. 130-150 N (13-15 kg), spring and fastening pins made of stainless steel, height of locking latch approx. 35 mm, suitable for door handle art. no. 85101 see page 23 dim.: WxHxD approx. 85x59x40 mm weight approx. 295 g

art. no. 85005 roll closure colour brown

art. no. 85006 roll closure colour white

art. no. 85015 roll closure colour high-polished chrome

art. no. 85018 roll closure colour matt-chrome

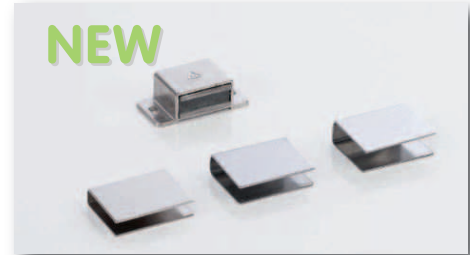
Door magnet for screwing on

magnet with magnetic force approx. 80 N in a brass-coated metal casing for screwing on with slot-fastening for a simple depth adjustment, dim. magnet: WxHxD approx. 46x24x15 mm, incl. nickel-plated U-adhesion sheet (easy fitting - only clip U-adhesion sheet to glass door) dim. U-adhesion sheet: DxW approx. 35x27 mm

art. no. 85087 with U-adhesion sheet for glass door thickness 8 mm

art. no. 85088 with U-adhesion sheet for glass door thickness 6 mm

art. no. 85089 with U-adhesion sheet for glass door thickness 10 mm



Door magnet incl. U-adhesion sheet

magnet in nickel-plated hexagonal casing with drill-in thread pin M6x22 mm, total height 28 mm; incl. nickel-plated U-adhesion sheet for glass panes (easy fitting - only clip U-adhesion sheet to glass door), dim. U-adhesion sheet: HxW approx. 35x27 mm

art. no. 8506 magnet with magnetic force approx. 95 N (9.5 kg) in hexagonal casing 15 mm; incl. U-adhesion sheet for glass panes 8 mm, weight approx. 28 g

art. no. 85061 magnet with magnetic force approx. 95 N (9.5 kg) in hexagonal casing 15 mm; incl. U-adhesion sheet for glass panes 6 mm, weight approx. 28 g

art. no. 85063 magnet with magnetic force approx. 95 N (9.5 kg) in hexagonal casing 15 mm; incl. U-adhesion sheet for glass panes 10 mm, weight approx. 28 g **NEW**

art. no. 8508 magnet with magnetic force approx. 160 N (16 kg) in hexagonal casing 22 mm; incl. U-adhesion sheet for glass panes 8 mm, weight approx. 42 g

art. no. 85083 magnet with magnetic force approx. 160 N (16 kg) in hexagonal casing 22 mm; incl. U-adhesion sheet for glass panes 10 mm, weight approx. 42 g **NEW**

art. no. 85085 magnet with magnetic force approx. 160 N (16 kg) in hexagonal casing 22 mm; incl. U-adhesion sheet for glass panes 6 mm, weight approx. 42 g

Door magnet incl. round adhesion sheet with drill hole

magnet in nickel-plated hexagonal casing with drill-in thread pin M6x22 mm, total height 28 mm; incl. round nickel-plated adhesion sheet Ø 24x1.5 mm with drill hole for screwing on

art. no. 85062 door magnet with magnetic force approx. 95 N (9.5 kg) in hexagonal casing 15 mm, weight approx. 16 g

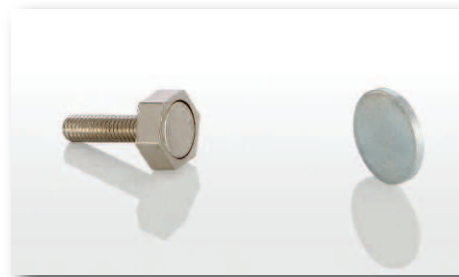
art. no. 8507 door magnet with magnetic force approx. 160 N (16 kg) in hexagonal casing 22 mm, weight approx. 30 g



and fastening technology for glass panes

Door magnet incl. round adhesion sheet without drill hole art. no. 85060

magnet with magnetic force approx. 95 N (9.5 kg) in nickel-plated hexagonal casing 15 mm with drill-in thread pin M6x22 mm, total height 28 mm; incl. zinc-plated round adhesion sheet Ø 20x2 mm - for gluing on e. g. doors weight approx. 15 g



Door magnet incl. rectangular adhesion sheet with drill hole art. no. 85064

magnet with magnetic force approx. 95 N (9.5 kg) in nickel-plated hexagonal casing 15 mm with drill-in thread pin M6x22 mm, total height 28 mm; incl. zinc-plated, rectangular adhesion sheet with 2 drillings for screwing on e. g. to wooden doors/windows
dim. adhesion sheet: HxWxD 50x15x2 mm
weight approx. 20 g

Threaded sleeve for magnets art. no. 85040

suitable for magnets with magnetic force approx. 95 N and 160 N, for an easy manual regulation of the individually required height and therefore the force of the magnet, a turned guidance beginning simplifies a centric screwing e. g. into door knobs and handles, inside thread M6, outer diameter 12 mm, length 18 mm, made of zinc-plated steel, packet of 10 pcs. weight approx. 50 g



Sealings



Glass-to-glass edge sealing translucent for sauna cabins art. no. 85055

suitable for 8 mm glass doors, self-adhesive Acrylate glue after removing the masking tape, made of TPE-plastic which is durable heat-resistant up to 110 °C; weather-, UV- and ozone-resistant, for larger orders we deliver 50 m rolls, width 6 mm, height 4 mm
weight approx. 10 g/m

Door sealing beige art. no. 8505

for door rabbet height 14.5 mm - door rabbet width 5.5 mm - top width 9.5 mm, made of TPE-plastic which is durable heat-resistant up to 110 °C, suitable for glass and wooden doors for sauna and steam bath, weather- and ozone-resistant, for larger orders we deliver 50 m rolls
weight approx. 80 g/m



Fastening technology for glass panes



Protection sleeves art. no. 85030

for glass panes 8-10 mm thickness, for screw connection with straight surface through countersunk screw M8 dim.: top Ø 19 mm, bottom Ø 11.5 mm, packet of 10 pcs., weight approx. 6 g

Point holding system art. no. 85032

consists of protection sleeve art. no. 85030 and countersunk screw M8x20 mm made of stainless steel and cover cap in silver-grey (brown or white cover caps are available on request), for a screw connection with straight surface through the glass pane into an existing thread, packet of 10 pcs., weight approx. 100 g

Point holding system art. no. 85036

consists of art. no. 85032 with threaded nut M8x18 mm made of zinc-plated steel, for a screw connection with straight surface through the glass pane into wood, packet of 10 pcs., weight approx. 145 g

Flood shower buckets

all wooden buckets are made of durable larch wood - inside and outside coated with watertight varnish, pull chain length 700 mm with user-friendly tilt lever, all metal parts are made of stainless steel (also stainless steel can rust in salt or chlorine ambient air or by cleaning with detergents containing chlorine! Therefore we assume no guarantee), connection thread 1/2" for water filling with pressure hose, water level from 4.5 to 7.5 l is adjustable with swimming valve
dim.: bucket: WxH approx. 305x270 mm



Wooden flood shower bucket with holder
art. no. 87038

for wall or ceiling assembly
dim. holder WxHxD 350x100x350 mm
weight approx. 5.7 kg

Wooden flood shower bucket with hanging chain
art. no. 87030

chain approx. 70 cm long made of stainless steel for hanging on a ceiling hook
weight approx. 3.9 kg



Wooden flood shower bucket with holder arm
art. no. 87033

holder arm made of stainless steel for wall assembly, incl. 2 link chains each length approx. 35 cm
dim.: total length holder arm 660 mm
screw on plate WxH 200x200 mm
weight approx. 6.7 kg

Flood shower bucket with holder made of stainless steel
art. no. 87039

for wall or ceiling assembly
dim. holder WxHxD 350x100x350 mm
weight approx. 3.8 kg



Flood showers made of chrome-plated brass



NEW

Square flood shower

water flow approx. 17 l/min. (at 3 bar water pressure)
outer dim.: WxHxD approx. 200x40x165 mm
weight approx. 1.5 kg

art. no. 87025 connection thread 1/2"

art. no. 87027 connection thread 3/4"

**Flood shower arched incl. ball joint and wall rosette**

art. no. 87003 connection thread 1/2"

water flow approx. 75 l/min. (at 3 bar water pressure), dim. outside: WxHxD approx. 88x75x155 mm, weight approx. 650 g

art. no. 87012 connection thread 3/4"

water flow approx. 75 l/min. (at 3 bar water pressure), dim. outside: WxHxD approx. 88x75x155 mm, weight approx. 700 g

art. no. 87020 connection thread 1"

water flow approx. 145 l/min. (at 3 bar water pressure), dim. outside: WxHxD approx. 142x90x200 mm, weight approx. 1.7 kg

Kneipp-hoses

food approved, double-walled hose length 1.5 m for a soft and full water jet, with chromed union nut and metal end piece for fastening in the included wall holder.
Kneipp procedure: the Kneipp shower starts at the backside of the right leg, is performed upwards to the torso at backside and is then let downwards at the front side again.
After that follows the same procedure for the left leg, right and left arm, body and possibly the face.

art. no. 87099 Kneipp-hoses in other hose lengths/colours, union nuts and water outlet nozzles are available on request



Kneipp-hose white with union nut 1/2"

art. no. 870810
weight approx. 500 g

Kneipp-hose white with union nut 3/4"

art. no. 870830
weight approx. 1.2 kg



Kneipp-hose silver with union nut 1/2"

art. no. 870815
weight approx. 730 g



Hand flood shower with white hose and union nut 1/2"

art. no. 870950

flood shower made of chrome-plated brass, width flood outlet: approx. 80 mm, with white food approved, double-walled hose length 1.5 m with chromed union nut, incl. solid-metal wall holder weight approx. 1.0 kg

Pressure shower polished-chrome with white hose and union nut 1/2"

art. no. 87097

pressure shower made of polished-chrome ABS - only when the pressure handle gets pushed, the water flows and the jet can be regulated by the pressure. A maximum continuous water jet can be adjusted by turning up the pressure handle.

Incl. hose with length 2 m made of PVC and wall holder.
E. g. suitable for cleaning the seats in steam bath rooms
weight approx. 340 g



Wall connection angles

made of high-polished chrome-plated brass, high-quality product with back stream protector. If no intrinsically safe stop valve is used, you have to install an additional pipe ventilation on site!

Wall connection angle 1/2x1/2"

art. no. 870720

suitable for art. nos. 870810, 870815, 870950 and 87097, dim.: Ø approx. 54 mm, height approx. 32 mm
weight approx. 150 g

Wall connection angle 3/4x3/4"

art. no. 87073

suitable for art. no. 870830, incl. interchangeable threaded mount for water connection 1/2" instead of 3/4", dim.: Ø approx. 50 mm, height approx. 55 mm
weight approx. 700 g

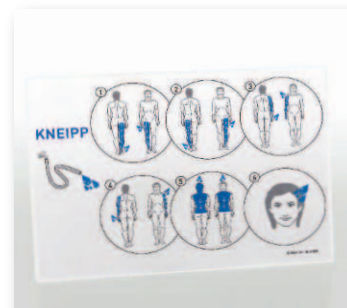


water saving due to automatic-stop

Self-closing valve 1/2x1/2"

art. no. 87075

the water run time is adjustable by the customer with the supplied Allen key from approx. 0 - 55 seconds, suitable for a water pressure of 0,1 - 3 bar, without integrated back stream protector, made of high-polished chrome-plated brass, incl. wall rosette; suitable for art. nos. 870810, 870815, 870950 and 87097
dim.: WxH approx. 33x130 mm
weight approx. 360 g



Info board Kneipp procedure international

art. no. 87089

colourfully illustrated (copyright protected), company imprint is possible. Water-, steam- and abrasion-resistant laminated
dim.: WxH approx. 215x300 mm
weight approx. 35 g

White coloured foot basins for commercial use

suitable for fixed or for place changeable installation, incl. overflow pipe made of chromed metal 1 1/2" - max. water level 115 mm
warm foot baths before and between the sauna sessions are part of the recommended healthy sauna bathing cycle

**Square foot basin made of sanitary ceramic
art. no. 87160**

inner dim.: WxH approx. 330x175 mm
outer dim.: WxH approx. 370x230 mm
dimensional variations +/- 3 mm of manufacturing reasons unavoidable
weight approx. 15.3 kg

**Round foot basin made of sanitary ceramic
art. no. 87230**

inner dim.: Ø approx. 365 mm, height approx. 175 mm
outer dim.: Ø approx. 405 mm, height approx. 230 mm
dimensional variations +/- 3 mm of manufacturing reasons unavoidable
weight approx. 16.4 kg

**Round foot basin made of mineral casting,
colour white
art. no. 87240**

Made in Germany, CE-approved, easy-care, repairable at minor damages (for this purpose we can offer you a special repair kit), other colours (e. g. black, dark and light grey) are available on request
inner dim.: Ø approx. 385 mm, height approx. 179 mm
outer dim.: Ø approx. 428 mm, height approx. 230 mm
dimensional variations +/- 2 mm of manufacturing reasons unavoidable
weight approx. 15 kg

**Foot basin made of larch wood
art. no. 83811**

content approx. 17 l, wooden stripes with tongue and groove are fixed with 2 band-iron hoops, suitable plastic insert art. no. 83820
dim.: WxH approx. 400x200 mm (with handle 300 mm)
weight approx. 3.3 kg

**Foot basin made of conifer wood
art. no. 83815**

incl. plastic insert art. no. 83820, content approx. 17 l, for private use, fixed with 2 band-iron hoops made of steel
dim.: WxH approx. 400x200 mm (with handle 300 mm)
weight approx. 2.8 kg

**Plastic insert
art. no. 83820**

suitable for foot basins art. nos. 83811 and 83815, made of polyethylene, as a protection for the wood against water absorption and upwelling - therefore no permanent water filling is required
dim.: WxH approx. 370x160 mm
weight approx. 400 g

Double-foot basins

made of white GRP-plastic RAL 9010 (other RAL-colours are available on request), incl. overflow pipes made of plastic 1 1/2" - max. water level approx. 330 mm, inner dim. of basin: WxLxH 295x380x390 mm

**Double foot basin with outer
cladding and stand bases
art. no. 87141**

outer dim.: WxLxH 800x500x530 mm
weight approx. 16 kg

**Double foot basin
for installation
art. no. 87146**

without outer cladding and without stand bases
outer dim.: WxLxH 800x500x390 mm
weight approx. 6.5 kg



Pool barrels

approx. 480 l water content with wooden step inside and outside stairs incl. overflow pipe 1 1/4" - max. water level approx. 75 cm
 tied with waterproof glued double groove and tongue and 3 zinc-plated, retightenable band-iron hoops
 dim.: LxWxH approx. 115x75x100 cm
 weight approx. 80 kg



Pool barrel made of natural cambala wood with plastic insert and cover protection
 art. no. 89611



Pool barrel made of larch wood outside natural wood - inside clear coating
 art. no. 89621



Pool barrel/swimming pool thermometer
 art. no. 8216

with flexible float foam and securing rope, all metal parts are made of stainless steel,
 scale silver-coloured with measuring range: -10 °C up to +50 °C
 dim.: swim ring: Ø 110 mm, total length approx. 140 mm
 weight approx. 180 g



White bathing sandals

made of soft PVC, antibacterial and athlete's foot repellent

for women shoe size approx. 36/37

art. no. 8610

weight approx. 360 g

for men shoe size approx. 41/42

art. no. 8614

weight approx. 500 g



mechanical foot disinfecting device

art. no. 87101

max. content 7.5 l with filling level indicator and security against unauthorized opening, a water- and power-connection is not required, activation via foot pedal mechanism, incl. wall mounting panel made of robust- and maintenance-free material, suitable for alcohol based disinfectant liquid e. g. art. no. 87112, with special nozzle position for a sparing but complete wetting of the foot-bottom and -top
 dim.: WxHxD approx. 220x390x400 mm
 weight approx. 7.7 kg



athlete's foot prophylaxis 5 l

art. no. 87112

suitable for mechanical foot disinfecting device art. no. 87101, it is sprayed undiluted onto the skin, it should sufficiently wet the skin and allow to take effect for approx. 30 seconds, acts by isopropyl alcohol, aqua, benzalkonium chloride against yeasts, fungal spores and the athlete's foot *Trichophyton rubrum* - is confirmed by certification, also has a cooling and refreshing effect, is free of dyes and perfumes
 weight approx. 5.1 kg



Holder for glasses

made of plywood with picture motif,
for wall mounting

for 1 glasses art. no. 87791

dim.: WxHxD approx. 170x130x65 mm
weight approx. 200 g

for 4 glasses art. no. 87795

dim.: WxHxD approx. 170x420x65 mm
weight approx. 685 g



Holder for walking aids art. no. 8598

screw right next to the entrance door of
sauna or steam bath room, easy and safe
fixation of walking aids due to flexible rub-
ber strap, also suitable for the hang-up of
other equipments, e. g. broom with stick
Ø 20-30 mm, casing made of black plastic
dim.: WxH approx. 74x47 mm
weight approx. 30 g



Wooden clothes hook with 4 hangers art. no. 87603

dim.: WxHxD approx. 370x57x50 mm
weight approx. 155 g



Stool square art. no. 87801

made of natural wood, is supplied with
ready-assembled feet
dim.: WxHxD approx. 40x43x28 cm
weight approx. 2.4 kg



Sauna rule board with language DIN A4

(copyright), company logo imprint is possi-
ble. Water-, damp- and abrasion-resistant
dim.: WxH approx. 215x300 mm
weight approx. 35 g

in German art. no. 83400

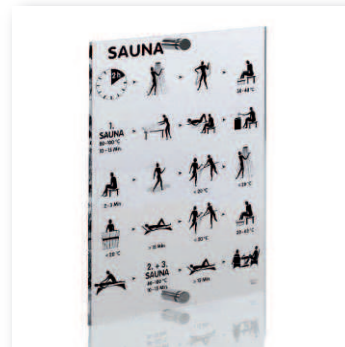
in other languages art. no. 83454

are available on request



Sauna rule board international lami- nated DIN A4 art. no. 83402

with picture language (copyright), company
logo imprint is possible. Water-, damp- and
abrasion-resistant laminated
dim.: WxH approx. 215x300 mm
weight approx. 35 g



Sauna rule board international printed on acrylic art. no. 83415

2-coloured printed with picture language
(copyright) on 5 mm thick crystal-clear acrylic
with polished edges, company logo imprint is
possible, incl. 2 chrome-plated standoff wall
mounts
dim.: WxH approx. 195x297 mm
weight approx. 360 g



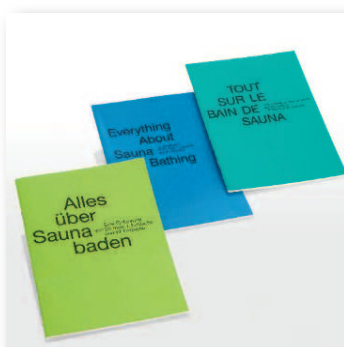
Rule board for sauna and vitality bath international 4-coloured printed with picture language 12 amusing pictures "angel & devil" (copyright)

laminated DIN A4 art. no. 83409

dim.: WxH approx. 215x300 mm
weight approx. 35 g

glued on plywood board art. no. 83453

with hanger loop
dim.: WxHxD approx. 210x320x20 mm
weight approx. 230 g



Sauna info book DIN A5

36 pages with a lot of valuable and interes-
ting information about sauna bathing by
Dr. med. I. Fritzsche and W. Fritzsche
weight approx. 65 g

art. no. 8800 in German

"Alles über Saunabaden"

art. no. 8801 in English

"Everything About Sauna Bathing"

art. no. 8802 in French

"TOUT SUR LE BAIN DE SAUNA"

Wall shelves made of wood

art. no. 87772

outer dim.: WxHxD approx. 210x150x60 mm
slot capacity WxD approx. 190x50 mm
weight approx. 150 g

art. no. 87774 3 ranges

outer dim.: WxHxD approx. 180x315x40 mm
slot capacity WxHxD approx. 160x75x30 mm
weight approx. 260 g





Printed natural bark slice "Keinen Schweiß auf's Holz"
art. no. 8347
 with hanger loop
 dim.: WxHxD approx. 490x200x20 mm
 weight approx. 700 g

Printed sign made of plywood "Keinen Schweiß auf's Holz"
art. no. 8346
 with prebored screw holes
 dim.: WxHxD approx. 340x190x10 mm
 weight approx. 330 g



Printed signs made of natural wood octagonal
art. no. 8767-689
 dim.: WxHxD approx. 240x110x20 mm
 weight approx. 280 g

Motifs	art. no.
Infrarot	8767
Sauna	8768
WC Men	87680
Schwimmbad	87683
Fitness-Studio	87684
Ruheraum	87685
Duschraum	87686
Solarium	87687
Dampfbad	87689



Signs bark slice natural
art. no. 8791-97
 dim. WxHxD approx. 250x120x12 mm
 weight approx. 200 g

Motifs	art. no.
WC	8791
Schwimmbad	8793
Duschraum	8796
Solarium	8797
Dampfbad	87911



Signs with burned text/motif acc. to customers' request
art. no. 8799
 natural bark slice dim.: WxHxD approx. 420x160x20 mm or approx. 250x110x12 mm or solid wooden board dim.: WxHxD approx. 310x210x15 mm each without hanger, burned text written in Arial (other fonts are available on request)



Sauna bathing procedure for kids laminated DIN A4
 contains the most important information about sauna bathing for kids, 4-coloured illustration (copyright), company logo imprint is possible. Water-, damp- and abrasion-resistant laminated
 dim.: WxH approx. 215x300 mm
 weight approx. 35 g

in German
art. no. 83455

in English
art. no. 83457



Lettering to stick onto glass doors
 made of up to 90 °C heat- and moisture-resistant red foil

Lettering "Sauna"
art. no. 87690
 WxH 30x10 cm

Lettering "90°C"
art. no. 87691
 WxH 15x10 cm

Lettering acc. to the customers' request
art. no. 87692
 are available on request



Combined thermo-/hygrometer 120 mm
art. no. 82020
 for recreation rooms, swimming pools and infrared cabins, casing and scale white, bimetal measuring device with measuring mechanism adjustable, depth approx. 25 mm
 weight approx. 140 g

Combined thermo-/hygrometer with wooden frame 155 mm
art. no. 82050
 art. no. 82020 with round wooden frame
 depth approx. 30 mm
 weight approx. 280 g



Coin-operated machine
art. no. 8910
 with display showing the number of coins or remaining time, adjustable running time from 1 - 320 min., coins or token coins (1 - 4 pc.) is selectable (please indicate when placing your order), with return of counterfeit money, silver sheet steel casing with cylinder lock, internal electronic components are splash-proof, Made in Germany, 230 V/50 Hz
 dim.: WxHxD approx. 160x260x110 mm
 weight approx. 3.5 kg

Coin-operated machine other models
art. no. 8911
 are available on request

Token coins packet of 100 pcs.
art. no. 8913
 suitable for coin-operated machine art. no. 8910, special product made of brass to avoid abuse of the coin-operated machine
 dim.: Ø 25 mm, thickness: 2 mm
 weight approx. 700 g



Sauna brush
art. no. 86030
 from European production, made of wood with 2 cm high natural bristles
 dim.: LxW approx. 280x60 mm
 weight approx. 110 g

Hook bar with 2 hangers
art. no. 87596
 made of wood with wooden covering caps for screw holes, printed with 2 amusing picture motifs "angel & devil" (copyright)
 dim.: WxHxD approx. 160x55x45 mm
 weight approx. 65 g

Sauna brush set
art. no. 86011
 consists of 2 brushes art. no. 86030 and 1 hook bar art. no. 87596
 weight approx. 290 g

Sauna brush
art. no. 86003
 made of varnished wood, with removable handle, total length approx. 40 cm, brush with approx. 2 cm high natural bristles and with hand loop. A skin massage supports the blood flow, dim.: LxW approx. 130x70 mm
 weight approx. 120 g





	art. no.	model	characteristics	heating power kW	suitable for sauna-volume m ³ approx.	dim. in mm WxHxD	stone filling kg approx.	weight without stones kg appr.	electrical connection
1	81090	Eligatherm	- for commercial and private sauna	4.5	4 - 6	400x610x360	15	11	400 V/3N~/50 Hz
	81100	Eligatherm	- free-standing device	6.0	6 - 8	400x610x360	15	11	400 V/3N~/50 Hz
	81110	Eligatherm	- inner-/outer cladding and stone	7.5	7 - 9	400x610x360	15	11	400 V/3N~/50 Hz
	81135	Eligatherm	compartment made of stainless steel	9.0	9 - 12	470x610x360	15	15	400 V/3N~/50 Hz
	81140	Eligatherm	- Made in Germany	12.0	12 - 18	620x690x430	20	24	400 V/3N~/50 Hz
	81150	Eligatherm	- durable heating elements with	15.0	15 - 23	620x690x430	20	24	400 V/3N~/50 Hz
	81160	Eligatherm	1.5-2.5 kW/pc. depending on	18.0	18 - 28	770x690x430	25	32	400 V/3N~/50 Hz
	81170	Eligatherm	the heating power	24.0	24 - 38	960x690x430	30	36	400 V/3N~/50 Hz
	81180	Eligatherm			larger heating powers on request				
2	81406	Narvi MES	- for private sauna	4.5	4 - 6	430x580x295	30	12	400 V/3N~/50 Hz
	81416	Narvi MES	- wall-mounted device	6.0	6 - 8	430x580x295	30	12	400 V/3N~/50 Hz
	81436	Narvi MES	- outer cladding black coated,	9.0	9 - 12	430x580x295	30	12	400 V/3N~/50 Hz
	81506	Narvi OS	inner cladding and base aluminised	4.5	4 - 6	430x580x295	30	12	400 V/3N~/50 Hz
3	81516	Narvi OS	- original Finnish sauna heater	6.0	6 - 8	430x580x295	30	12	400 V/3N~/50 Hz
	81536	Narvi OS	- durable heating elements with 1.5-3 kW/pc. depending on the heating power	9.0	9 - 12	430x580x295	30	12	400 V/3N~/50 Hz
			- Narvi MES: with integrated control panel to be mountable on the left or right side, with adjustable pre-setting timer up to 4 hours and heating time up to 4 hours						
			- Narvi OS: without integrated control panel, additional control panel e. g. art. no. 81711/81716 is needed						
4	82412	SH with evaporator	- for commercial and private sauna	4.5	4 - 6	450x630x360	12	20	400 V/3N~/50 Hz
	82422	SH with evaporator	- wall-mounted device	6.0	6 - 8	450x630x360	12	20	400 V/3N~/50 Hz
	82432	SH with evaporator	- inner- and outer-cladding and evaporator	7.5	7 - 9	450x630x360	12	20	400 V/3N~/50 Hz
	82442	SH with evaporator	container 5 l made of stainless steel	9.0	9 - 12	450x630x360	12	20	400 V/3N~/50 Hz
			- Made in Germany						
			- durable heating elements with 1.5 kW/pc.						
			- incl. herb tray, aroma cup, water shortage signal and ball valve for water draining						

We deliver all sauna heaters without infusion stones. However, only with the sufficient quantity of stones the sauna heaters are allowed to put into operation! If required, please order the infusion stones art. no. 83500/83501 in adequate quantity additional!



Electric sauna heaters - other designs art. no. 81599

e. g. sauna stones constantly heated selectable up to 150-220 °C (filling quantity approx. 80 kg) for heating-up the sauna cabin to sauna temperature within only a few minutes or sauna heater with approx. 80 kg infusion stones and control panel mounted in the sauna room (max. height 80 cm) or sauna heater as back-wall/under-bench heater are available on request

Wood fuelled sauna heaters art. no. 80149

different designs, i. a. also with wood fueling from an anteroom are available on request



Digital control panel for sauna heaters up to 9 kW with 24 hour pre-setting timer
art. no. 81716

Made in Germany, selection of the continuously variable temperature 10 - 110 °C, with control of fan and light, with operation time limit 6 hours (can be extended for commercial operations up to 20 hours). Incl. temperature sensor and overheating protection in a plastic case (please order the connection cables for temperature sensor/overheating protection art. nos. 85882/85883 in desired length separately), 400 V/50 Hz, dim.: WxHxD approx. 285x247x87 mm weight approx. 2.6 kg

Control panels special designs
art. no. 81720

e. g. heat resistant for mounting in the sauna room or with separated operating and power part e. g. with straight to the surface built-in glass front are available on request



Control panel for sauna heaters up to 9 kW with 12 hour pre-setting timer
art. no. 81711

Made in Germany, with rotary switch for operation and selection of the continuously variable temperature 30 - 120 °C, fan as well as light. Via pluggable jumper with or without operation limit timer 6 or 12-hours usable. With control lamps for operating, heating period and pre-setting timer; with temperature sensor and overheating protection in a plastic case incl. twin wire 2x0.5 mm² length 3 m. Usable for sauna heaters from 10 kW on with power switching device art. no. 8178 or 8179 dim.: WxHxD approx. 215x230x70 mm weight approx. 1.5 kg



Control panel for sauna heaters with evaporator (art. nos. 82412-82442)
art. no. 8175

Made in Germany, with rotary switch for operation, fan and light. Via pluggable jumper with or without operation limit timer 6 or 12-hours usable. Bathing option 1: Finnish sauna operation - selection of the continuously variable temperature 80 - 110 °C. Bathing option 2: vitality sauna - selection of the continuously variable temperature 40 - 60 °C, at the same time a separate evaporator with max. 3 kW heating power is put into operation (we can offer you suitable additional evaporators on request), with automatic after-run drying and water shortage signal, 12-hours pre-setting timer, with temperature sensor and overheating protection in a plastic case incl. twin wire 2x0.5 mm² length 3 m. Usable for sauna heaters from 10 kW on with power switching device art. no. 8178 or 8179 dim.: WxHxD approx. 215x230x70 mm weight approx. 1.7 kg



Power switching device 9 kW
art. no. 8178

combined with the electrical control panels art. nos. 81711 and 8175 the maximal switched power comes to 18 kW, Made in Germany, dim.: WxHxD approx. 215x230x70 mm weight approx. 1.5 kg

Power switching device 21 kW
art. no. 8179

combined with the electrical control panels art. nos. 81711 and 8175 the maximal switched power comes to 30 kW, Made in Germany, dim.: WxHxD approx. 250x160x120 mm weight approx. 5.4 kg



Silicone cables heat resistant up to 180 °C

- art. no. 85871** 3x1.5 mm² for heaters up to 3 kW
- art. no. 85801** 5x1,5 mm² for heaters up to 6 kW
- art. no. 85811** 5x2,5 mm² for heaters up to 9 kW
- art. no. 85821** 5x4,0 mm² for heaters up to 15 kW
- art. no. 85830** 5x6,0 mm² for heaters up to 18 kW

Silicone twin wire 2x0.75 mm² for the connection of temperature-/moisture sensor and overheating protection to the electrical control panel
art. no. 85882 colour white
art. no. 85883 colour red



Warning signs aluminium

installation above the sauna heater on the cabin wall - meets the requirements of the VDE-regulation for saunas, german 2-coloured imprinted - other languages 1-coloured imprinted dim.: WxH 100x50 mm, weight approx. 7 g

- art. no. 85751 German** "Achtung Brandgefahr"
- art. no. 8577 English** "FIRE WARNING"
- art. no. 8578 French** "ATTENTION AU FEU"
- art. no. 8579 Italian** "ATTENZIONE PERICOLO D' INCENDIO"
- art. no. 85791 Spanish** "Atencion Peligro de Incendio"
- art. no. 85792 Dutch** "Pas op brandgevaar!"
- art. no. 85799 other languages** are available on request



Infusion stones in carton approx. 10 kg
art. no. 83500

made of olivine diabase, up to fist-sized grains, extremely durable and robust stones. Need to be washed before use. Recommendation: larger stones placed underneath, smaller ones on top, at least once a year depending on the use the stones should be controlled and weathered ones replaced dim.: WxHxD approx. 250x210x140 mm

Infusion stones unpacked
art. no. 83501

if interested please tell us your desired quantity



Aroma-Infusion pot
art. no. 84988

with continuously variable drop valve for mounting directly above the sauna heater. The steady supply with water (if desired with scent) on the hot infusion stones results in a pleasant climate and a constantly increased air humidity. Pot made of reddish grained ceramic, inside colourless varnished, delivery incl. 1 m chain and ceiling hook made of stainless steel content max. approx. 400 ml dim.: ceramic pot: Ø approx. 115 mm height approx. 82 mm weight approx. 550 g



Fragrance herbs
art. no. 82801-86

available in the following fragrance notes: eucalyptus, mint, sage, birch, lavender blossoms, winter magic, chamomile, meadow hay. Suitable for scenting of vitality saunas (e. g. for sauna heaters with evaporator art. nos. 82412-442) and steam bath rooms. Carton with 20 vapor-permeable single bags, filling approx. 10 g each bag with natural dried plant material in tested food-safe quality. Please find more information on Page 9.

General

eliga gas-fuelled heaters for sauna and warm air rooms are tested to EC Gas Appliance Directive 2009 Certificate no. 0085AQ0312, they are the result of a long and intensive research in the field of heating and ventilation technology. Temperatures of 80-100 °C are reached after about 90 minutes in a well isolated sauna. The dark radiator pipe heaters made of stainless steel and special steel with exhaust fan have a well thought-out construction, an easy installation, a long life span as well as **extremely economical operating costs** (see page 35). By a renowned and independent examination institute a degree of effectiveness of our eliga gas-fuelled heaters of over 90 % was proven.

eliga gas-fuelled heaters absorb air at floor level which then flows along the heating device and rises upwards as warm air. The air cools down slowly and sinks to the bottom on the other site where it is sucked in by the heater again (convection heat/air circulation). **The advantages of this type of heating are the short heating-up times and the rapid temperature change which is possible at any time.**

eliga gas-fuelled sauna heaters are **suitable for natural and liquid gas** (other gas types please request). All our gas-fuelled heaters are standardly delivered with nozzles for natural gas. The heating devices can be built in by a local specialist company (gas fitter/heating engineer). If you desire, we can also offer you the installation of the heater with the connection to an already existing exhaust chimney or to a chimney which is available from us made of stainless steel as well as the first heating and if desired a maintenance agreement.

eliga gas-fuelled sauna heaters can be installed **on a sidewall or in the middle of the room**, for recreation-, rest- and treatment rooms **on the ceiling**, they must be surrounded on site by a fireproof material and a protection grille made of metal at the upper side of the heater (not included in delivery). The material can individually be made of brick, ceramic, reflection material or other fireproof materials (refer to our examples of installation on page 35).

eliga gas-fuelled sauna heaters must not be installed on wooden-/synthetic-floors or on wooden ceilings (in this case a fireproof base must be made). **From the heater to inflammable wooden elements has to be at least a distance of 200 mm.** The gas burner is always located outside of the sauna- or recreation-room. The gas exhaust pipe is linked to the chimney with usual isolated heater pipes. To assist you we offer a comprehensive installation instruction.

An installation-permission for the gas-fuelled heaters through the local fire prevention office is necessary. **You are welcome to send us your drawings so we can already help you during your planning phase with our decades of experience.**

References

"Since 1999 we are heating our 45 m³ sauna on 344 days/year with a gas-fuelled sauna heater of the company Elsässer. Because of the durability of the gas heater and the low operating costs we have already achieved a significant saving of costs."

Mr. Neidt, manager Erlebnisbad Leck (Germany)

"... **The advantage of electrical heating is particularly in the installation process; the advantage of gas heating is in the running operation costs.** As the energy costs implicate a major possibility to negotiate with the suppliers, the specific local situation is important when deciding between an electric or gas-fuelled heater. In case that there is a gas connection nearby this form of energy should be taken into consideration. ..."

extract from the final report of the **Fraunhofer-Institut** for wood research about the quality control of commercially used saunas and hot air rooms in cooperation with **Deutscher Sauna-Bund e. V.**

Further references on request

Technical Data

1. eliga-standalone heaters for sauna with stone containers for infusion stones built-in models without external cladding

art. no. model	8041 510 ST	8042 520 ST	8043 530 ST	8044 540 ST	8045 550 ST	
suitable for sauna room size	m ³	20	40	60	80	100
nominal heat output	kW	11	20	30	40	48
nominal heat input	kW	12	21	32	42	50
gas connection	Ø inch	1/2"	1/2"	1/2"	3/4"	3/4"
electrical data	V/Hz/W	230/50 – 0,3 A / 71 W				
width	mm	100	370	640	910	1180
length/depth	mm	1350	1150	1150	1150	1150
height	mm	1100	1100	1100	1100	1100
flame tube Ø	mm	100	100	100	100	100
height to center line connector of flame tube	mm	953	953	953	953	953
width to center line connector of flame tube	mm	586	586	586	586	586
exhaust gas pipe Ø	mm	100	100	100	100	100
height to center line connector of exhaust tube	mm	150	150	150	150	150
width to center line connector of exhaust tube	mm	586	586	586	586	586
weight (without stones) approx.	kg	46	83	124	166	208
stone containers	pc.	1	2	3	3	4
required stones (not included in delivery)	kg	30	80	160	190	250
required space to cladding width	mm	300	570	840	1110	1380
required space to cladding depth	mm	1550	1350	1350	1350	1350

2. eliga back-bench/back-wall heaters for sauna and warm air rooms without infusion possibility, invisible and space-saving built-in models without external cladding in flat type

art. no. model	8051 310 HB	8052 320 HB	8053 330 HB	8054 340 HB	8055 350 HB	
suitable for room size	m ³	depending of isolation and desired room temperature				
nominal heat output	kW	11	20	30	40	48
nominal heat input	kW	12	21	32	42	50
gas connection	Ø inch	1/2"	1/2"	1/2"	3/4"	3/4"
electrical data	V/Hz/W	230/50 – 0,3 A / 71 W				
heating pipes Ø	mm	100	100	100	100	100
width heating shaft	mm	300	300	300	300	300
device dim.	mm	on request				
weight approx.	kg	46	83	124	166	208

NEW

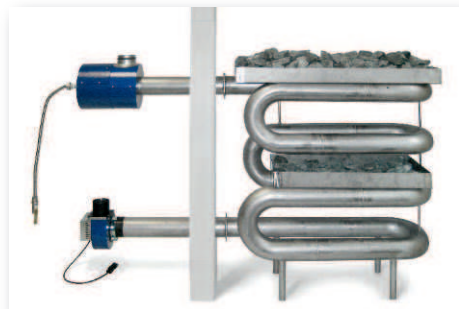
3. eliga overhead heaters for recreation-, rest- and treatment-rooms built-in models (reflector screen and cover grill are not included), minimum room height after installation 2.40 m

art. no. model	8061 410 DI	8062 420 DI	8063 430 DI	8064 440 DI	8065 450 DI	
suitable for room size	m ³	depending of isolation and desired room temperature				
nominal heat output	kW	11	20	30	40	48
nominal heat input	kW	12	21	32	42	50
gas connection	Ø inch	1/2"	1/2"	1/2"	3/4"	3/4"
electrical data	V/Hz/W	230/50 – 0,3 A / 71 W				
heating pipes Ø	mm	100	100	100	100	100
required space (height)	mm	300	300	300	300	300
device dim.	mm	on request				
weight approx.	kg	46	83	124	166	208

and warm air rooms

Installation examples

1. Standalone heaters for sauna mod. 510 - 550 ST



corner



center of the room



2. Back-bench/back-wall heaters for sauna mod. 310 - 350 HB



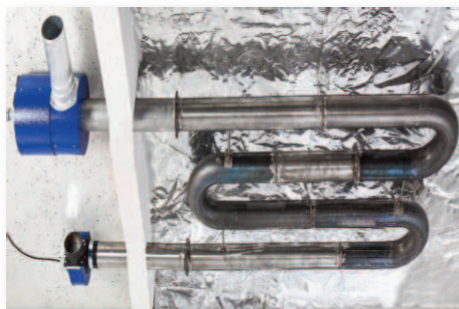
back-bench



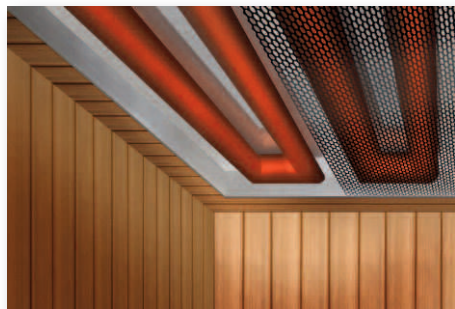
back-wall



3. Overhead heaters for recreation-, rest- and treatment-rooms mod. 410 - 450 DI **NEW**



overhead heater



Control panels



Comparison of operating costs for gas-fuelled and electric heater

Calculation sample for art. no. 8043 with 30 kW nominal heat output with an operating time of 360 days per year with 13 hours a day

energy from	natural gas	electricity
Nominal heat input	32 kW	30 kW
Energy for heating up	1,5 hx360x32 kW = 17,280 kWh	1 hx360x30 kW = 10,800 kWh
Energy for operation with 60 % heat input	13 hx360x32 kWx0.6 = 89,856 kWh	13 hx360x30 kWx0.6 = 84,240 kWh
Total energy requirement	107,136 kWh	95,040 kWh
Energy costs per kWh	0.033 €	0.188 €
Energy costs ventilator 70 W/h	70.08 €	-
Total net energy costs	3,605.57 €	17,867.52 €

Annual net operation-cost savings per year with natural gas compared to electricity: € 14,261.95

The comparison of operating costs is based on the current net prices for electricity and natural gas excl. VAT for the region Augsburg (status 01.02.2016). Ask your energy supplier for your valid energy purchase prices, as there are high price differences in each country. Because of the various design performances of sauna cabins, it is not possible to make a fully concrete prediction regarding the height of the acquisition and installation costs of a gas-fuelled heater. However, higher investment costs for gas-fuelled heaters for commercial use are more than counterbalanced after approx. 2-3 years by the significantly lower operating costs for natural gas and result in considerable heat cost savings. Basically, it can be said that the advantages of the cheaper gas price come to the fore more and more when having longer operating times. In addition, the onetime investment costs can possibly be subsidised by your gas supply company - please ask them directly.



Electrical control panel for gas-fuelled heaters art. nos. 8041-8065 art. no. 81772

Made in Germany, with rotary switch for operation and selection of the continuously variable temperature 30 - 120 °C, 12 hours pre-setting timer, fan as well as light. Via pluggable jumper with or without operation limit timer 6 or 12 hours usable. With control lamps for operation, heating period and pre-setting timer; with temperature sensor and over-heating protection in a plastic case incl. twin wire 2x0.5 mm² length 3 m, 230 V/50 Hz dim.: WxHxD approx. 215x230x70 mm weight approx. 1.5 kg

Electrical control panel for gas-fuelled heaters art. nos. 8041-8065 with evaporator art. no. 81777

Made in Germany, with rotary switch for operation, fan and light. Via pluggable jumper with or without operation limit timer 6 or 12 hours usable. Bathing option 1: Finnish sauna operation - selection of the continuously variable temperature 80 - 110 °C; Bathing option 2: vitality sauna - selection of the continuously variable temperature 40 - 60 °C, at the same time a separate evaporator with max. 3 kW heating power is put into operation (suitable additional evaporators are available on request), with automatic after-run drying and water shortage signal, 12 hours pre-setting timer, temperature sensor and over-heating protection in a plastic case incl. twin wire 2x0.5 mm² length 3 m dim.: WxHxD approx. 215x230x70 mm weight approx. 1.7 kg

**Back-rest**

bilateral ergonomically formed wooden back-rest for relaxed and comfortable sitting, the position is via slip-proof cork stoppers individually variable, rods: Ø 20 mm, side plate thickness: 15 mm, height approx. 50.5 cm

art. no. 85680 width: approx. 41.5 cm

weight approx. 1.4 kg

art. no. 85681 width: approx. 37.5 cm

weight approx. 1.3 kg

Back-rest with terry towelling

art. no. 85686

art. no. 85680 with removable cover, outside made of white cotton/terry - inside PVC/polyester-coated - therefore sweat-impermeable, cover is washable up to 95 °C weight approx. 1.7 kg

**Aroma pot**

art. no. 84989

for the aromatisation of infrared cabins, to hang from the ceiling in front of the infrared radiator with the incl. ceiling hook and 1 m chain made of stainless steel, pot made of reddish grained ceramic, inside colourlessly varnished content max. 400 ml dim. ceramic pot: Ø 115 mm height approx. 82 mm weight approx. 340 g

**Scent sprays 250 ml**

for the aromatisation of infrared cabins, dry and soft saunas, steam bath rooms as well as recreation rooms, made with natural essential oils, economical consumption - for an intensive scent development 1 push of the nozzle per m³ room size is enough weight approx. 300 g

art. no. 82601 Eucalyptus

art. no. 82602 Mint

art. no. 82603 Lemon grass

art. no. 82604 Lavender/Melissa

Please find effects and descriptions on page 9

**Sand timer**

natural wooden turnable casing with printed minute scale (registered design protection), glass cylinder with red sand duration tolerance +/- 2 minutes dim.: WxHxD approx. 55x320x35 mm weight approx. 320 g

20 min. duration

art. no. 83350

30 min. duration

art. no. 83360

**Thermometer 120 mm**

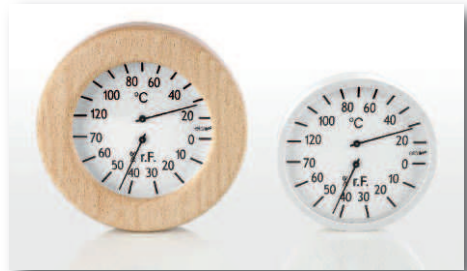
art. no. 82080

bimetal measuring device with adjustable measuring mechanism, casing and scale white - measuring range highlighted in colour, depth 25 mm weight approx. 140 g

Thermometer with wooden frame 155 mm

art. no. 82086

art. no. 82080 with round wooden frame depth approx. 30 mm weight approx. 280 g

**Combined thermo-/hygrometer 120 mm**

art. no. 82020

for infrared cabin, swimming pool and recreation room, bimetal measuring device with adjustable measuring mechanism, casing and scale white, depth 25 mm weight approx. 140 g

Combined thermo-/hygrometer in wooden frame 155 mm

art. no. 82050

art. no. 82020 with round wooden frame depth approx. 30 mm weight approx. 280 g

**Rule board DIN A4**

2-coloured illustrated (copyright), company logo imprint is possible. Water-, damp- and abrasion-resistant laminated dim.: WxH approx. 215x300 mm weight approx. 35 g

international with picture language

art. no. 82307

in German language

art. no. 82300

**Accessory set 4-parts**

art. no. 83695

consisting of aroma pot art. no. 84989, thermometer art. no. 82080, sand timer art. no. 83360, rule board international art. no. 82307 dim.: WxHxD 300x330x290 mm weight approx. 1.4 kg

Accessory set content to customers' request

art. no. 83699

**eliga-Des quick disinfectant and cleaning concentrate 250 ml**

art. no. 84979

for infrared cabin, sauna, steam bath and solarium. It is bactericidal, levurocidal and limited virucidal. At a mixture ration of 75 ml concentrate to 1 l water only 1 min. reaction time. Please note that the disinfectant concentrate is registered and licensed in Germany only, whether a registration outside of Germany is necessary must be checked by the importer himself. Use biocides safely - always read the label and product information before use! Weight approx. 270 g



LED-coloured light for infrared cabin/sauna up to 110 °C
art. no. 71005

incl. touch-sensor-radio-remote control, control module and power supply 100-240 V~50-60 Hz, illumination approx. 4m²/light, power input 18 W, for ceiling or wall installation, frame made of alder wood with light surface made of heat-resistant plastic - the single LEDs are not visible. The dimmable single colours red, green, blue, violet, turquoise, yellow and white or a in an adjustable speed fluent colour sequence with smooth colour transitions are adjustable with the control, radio-remote control is suitable up to max. 40 °C, outer dim. light: approx. 240x240x38 mm, dim. light surface: approx. 180x180 mm dim. remote control: approx. 114x55x23 mm, total weight approx. 1.75 kg
Further LED coloured lights can be found on page 13



Sign
art. no. 8767

made of natural wood with imprint
 dim.: WxHxD approx. 240x110x20 mm
 weight approx. 280 g

Loudspeakers

for infrared cabin, steam bath and sauna, IP55 water-protected as well as saltwater resistant, max. power 20 W, 8 ohm, for stereo quality use 2 loudspeakers



Loudspeakers

up to max. 120 °C
 cover plate: Ø 90 mm
 cut out: Ø approx. 73 mm
 depth approx. 37 mm
 weight approx. 265 g

art. no. 85970 colour black
art. no. 85975 colour silver



Loudspeaker white
art. no. 85967

up to max. 70 °C
 cover plate: Ø 135 mm
 cut out: Ø approx. 100 mm
 depth approx. 46 mm
 weight approx. 480 g



Transducer 20 watt
art. no. 85977

uses surfaces (e. g. wooden walls) capable of vibrating for music and speech reproduction, is screwed from the outside of cabin wall/ceiling, incl. 5 m connection cable with flat pins for connection to the audio system, IP68 water-protected, 8 ohm dim.: Ø 60 mm, height 36 mm incl. mounting plate weight approx. 220 g



MP3-radio
art. no. 85950

IP44 water-protected control panel applicable in infrared, sauna and steam bath room up to max. temp. 90 °C for controlling the MP3-radio, with switching key between Bluetooth, USB, SD and AUX-operation or radio, track or radio channel selection, volume control, On/Off switch; main unit for mounting outside the infrared/sauna or steam bath room, incl. plug-in power supply (100-240V~50-60Hz) and all connecting cables
 dim. main unit: WxHxD approx. 120x40x74 mm
 dim. control panel: WxHxD approx. 51x39x17 mm
 weight approx. 970 g



Foot heating mat 70 W
art. no. 81820

prevents cold feet in infrared cabins (also usable e. g. in the office under the desk), even heat distribution due to homogeneous area heating elements, with 230 V electrical connection cable length approx. 1.80 m with standardized European plug. Made of easy-care, watertight, washable and abrasion-proof grey plastic, Made in Germany
 dim.: LxWxH approx. 420x650x3 mm
 weight approx. 1.2 kg



Floor mat 20 x 20 cm

made of pleasant to walk PVC-plastic suitable for sauna, shower, steam bath and swimming pool, easy and quick combination of single mats adaptable to every size via a pressure-hook-system, easy to cut, meets the requirements of slide inhibiting for the highest field of application (=quality level C) according to DIN 51097, lets water drain away easily, antibacterial and mould repellent, UV-steady, rollable for cleaning, permissible temperature: -35 °C up to +70 °C, height 9 mm weight approx. 165 g

art. no. 8549 colour dark brown
art. no. 85490 colour beige **NEW**
art. no. 85495 colour anthracite-grey
art. no. 85498 colour light grey
art. no. 8559 other colours (white, black, pink, olive-green, bright- and dark-blue) are available on request

Further floor mats made of thermo-wood and in other dimensions you can find on page 17



Sitting mat/lying towel white

for infrared cabin, sauna, steam bath and swimming pool, material: top side cotton/terry towel-ling - back side PVC/Polyester-coated; hemmed border, material is particularly hygienic - as it is water and sweat-impermeable, washable up to 95 °C

art. no. 8255 Sitting mat
 dim.: WxH approx. 50 x 40 cm
 weight approx. 90 g

art. no. 8649 Lying towel
 dim.: WxH approx. 75 x 180 cm
 weight approx. 700 g



Steam bath fragrances

art. no. 82700-797

for a freshening and vitalising steam bath, made with a high concentration of natural essential oils in water-soluble emulsion without addition of alcohol, for an intensive scent effect and an economical consumption, evaporates residue-free

Sizes:

Weight approx.:

Steam bath fragrances effects and description of the scents

Steam bath fragrances	effects and description of the scents	1 l	5 l *
		art. no.	art. no.
Eucalyptus	balancing, purifying, stimulating, cooling, expectorant	82700	82701
Citrus/Orange	balancing, vitalising freshness, improves concentration, fruity	82710	82711
Hay flower	flowery, freshening, balancing	82723	82724
Spruce	freshening and air-purifying forest scent	82730	82731
Mountain pine	freshening, restorative, stimulates the blood flow, improves concentration	82740	82741
Mint	freshening, clearing, purifying, antiphlogistic	82750	82751
Lemon grass	vitalising, lemon-like smell, distributes tiredness	82763	82764
Eucamint	balancing, purifying, antiphlogistic, freshening	82773	82774
Lavender/Melissa	balancing, freshening, relaxing, promotes sleep	82780	82781
Oriental	mystical, contemplative like 1001 Nights	82783	82784

Other scents and sizes are available on request

82797

*Opener and tap for our 5 l canister you can find on page 8



Fragrance herbs

art. no. 82801-8286

for scenting steam bath rooms and vitality saunas. Carton with 20 vapor-permeable single bags fragrances: eucalyptus, mint, sage, birch, lavender blossoms, winter magic, chamomile, meadow hey), filling approx. 10 g each bag with dried natural plant material in tested food-safe quality
dim.: WxHxD 187x120x150 mm, weight approx. 400 g

Please find more information about our fragrance herbs on page 9



Electrode-steam generators

with disposable steam cylinders (cleanable cylinders are available on request), for normal tap water (conductivity 350-1250 $\mu\text{S}/\text{cm}$, water hardness 8-22° dH) up to 8 bar water pressure, with built-in digital control device i. a. for automatic scent dosing e. g. art. no. 8989, fan, lighting, pump elutriating system and disinfectant pump. With purchase of a telephone cable (which is not incl.) it is possible to install the control device separated from the steam generator, user guidance in German, English, French, Spanish or Italian (other languages are settable on request) is selectable, incl. temperature sensor with 6 m connection cable and steam outlet nozzle. Steam-, drainage- and condensate-hoses are not incl. - prices on request.
Max. surrounding temperature 40 °C, max. humidity 90 %

art. no. 89803 Steam generator 5 kg/h steam performance

power input 3.75 kW/230 V, dim.: WxHxD 365x620x275 mm, weight approx. 13.5 kg

art. no. 89813 Steam generator 8 kg/h steam performance

power input 6.0 kW/400 V, dim.: WxHxD 365x790x275 mm, weight approx. 13.5 kg

art. no. 89823 Steam generator 15 kg/h steam performance

power input 11.25 kW/400 V, dim.: WxHxD 365x710x275 mm, weight approx. 17 kg

art. no. 89833 Steam generator 25 kg/h steam performance

power input 18.75 kW/400 V, dim.: WxHxD 555x890x360 mm, weight approx. 34 kg

art. no. 8984 Steam generator - other steam powers and models

e. g. with cleanable steam cylinders are available on request



Automatic scent dosing without control

art. no. 8989

suitable for our steam generators art. nos. 89803-89833 or other steam generators with integrated control device for the scent dosing, max. possible scent dosing approx. 4 l/h, incl. 1.5 m suction hose and 3 m PTFE dosing hose, dosage valve made of stainless steel - which prevents the back pressure of the steam. Operating voltage 230 V/AC
dim.: WxHxD approx. 60x135x85 mm
weight approx. 0.6 kg



Warning sign steam injection "blowing cloud HOT"

art. no. 8291

printed in red colour on a silver sign made of aluminium. According to the guideline for the construction of commercial steam bath rooms of the German sauna association (status 2010) the steam injection place must be provided with a warning notice
WxH 100x50 mm
weight approx. 7 g



eliga-Des quick disinfectant and cleaning concentrate 250 ml

art. no. 84979

for steam bath, sauna and solarium. It is bactericidal, levurocidal and limited virucidal. At a mixture ration of 75 ml concentrate to 1 l water only 1 min. reaction time. Please note that the disinfectant concentrate is registered and licensed in Germany only whether a registration outside of Germany is necessary must be checked by the importer himself. Use biocides safely - always read the label and product information before use!
Weight approx. 270 g



Pressure shower polished-chrome with white hose and union nut 1/2"

art. no. 87097

pressure shower made of polished-chrome ABS - only when the pressure handle gets pushed, the water flows and the water jet can be regulated by the pressure. A maximum continuous water flow can be adjusted by turning up the pressure handle. Incl. hose length 2 m made of PVC and wall holder. Suitable for e. g. cleaning the seats in steam bath rooms
weight approx. 340 g

Please find further water hoses and fittings on page 27



LED-coloured-light for steam bath and sauna

art. no. 71006

incl. radio-remote control and power supply, for cabins up to 3.5x3.5 m; power consumption max. 34 W, LED-light suitable up to 125 °C cabin temperature, for ceiling or wall installation, light is made of heat-resistant plastic - the single LED's are not visible. The dimmable colours red, orange, yellow, green, turquoise, blue, violet and white or in an adjustable speed floating colour sequence with smooth colour transitions can be set with the remote control suitable up to 120 °C. Quality product Made in Europe
 outer dim. light: approx. 335x240x35 mm
 dim. remote control: approx. 70x30x15 mm
 total weight approx. 1.5 kg



Light for steam bath and sauna

art. no. 82230

IP55 water-protected, max. permissible surrounding temp. 125 °C, with frosted glass dome and ceramic screw base for light bulbs E 14 - at ceiling assembly up to max. 40 W (for halogen bulbs max. 28 W), voltage 230 V/50 Hz
 dim.: WxHxD approx. 75x170x90 mm
 weight approx. 770 g



Loudspeakers

for steam bath and sauna, IP55 water-protected as well as saltwater resistant, max. capacity 20 watt, 8 ohm, for stereo quality use 2 loudspeakers

art. no. 85967 Loudspeaker white up to max. 70 °C

cover screen: Ø 135 mm, cut out: Ø approx. 100 mm, depth 46 mm, weight approx. 480 g

art. no. 85970 Loudspeaker black up to max. 120 °C

cover screen: Ø 90 mm, cut out: Ø approx. 73 mm, depth 37 mm, weight approx. 265 g

art. no. 85975 Loudspeaker silver up to max. 120 °C

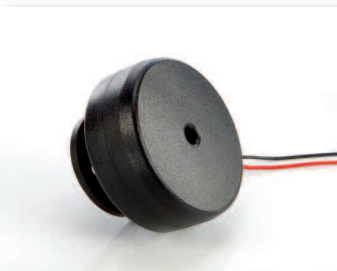
cover screen: Ø 90 mm, cut out: Ø approx. 73 mm, depth 37 mm, weight approx. 265 g



MP3-radio

art. no. 85950

IIP44 water-protected control panel applicable in steam bath and sauna room up to max. temp. 90 °C for controlling the MP3-radio, with switching key between Bluetooth, USB, SD and AUX-operation or radio, track or radio channel selection, volume control, On/Off switch; main unit for mounting outside the steam bath/sauna room, incl. plug-in power supply (100-240 V~50-60 Hz) and all connecting cables
 dim. main unit: WxHxD approx. 120x40x74 mm
 dim. control panel: WxHxD approx. 51x39x17 mm
 weight approx. 970 g



Transducer

20 watt

art. no. 85977

uses surfaces capable of vibrating for music and speech reproduction, is screwed from the outside of wall/ceiling, incl. 5 m connection cable with flat pins for connection to the audio system, IP68 water-protected, 8 ohm
 dim.: Ø 60 mm, height 36 mm incl. mounting plate
 weight approx. 285 g



Sitting mat/Lying towel white

suitable for steam bath, swimming pool, sauna and infrared cabin, material: top side cotton/terry - back side PVC/polyester-coated; hemmed border, material is particularly hygienic - as it is water and sweat-impermeable, washable up to 95 °C

art. no. 8255 Sitting mat

dim.: WxH approx. 50 x 40 cm, weight approx. 90 g

art. no. 8649 Lying towel

dim.: WxH approx. 75 x 180 cm, weight approx. 700 g



Waterproof wall clocks for steam bath, swimming pool, shower and wet room

usable up to max. 50 °C
 depth approx. 55 mm

Wall clock Ø 310 mm

art. no. 82351

white plastic case, low-noise battery-powered quartz-movement by sweep second movement (1 AA battery 1.5 V AA/LR6 is required - is included)
 weight approx. 720 g

Wall clock with radio movement

Ø 210 mm

art. no. 82360

mat-silver plastic case, low-noise battery-powered quartz-movement (1 AA battery 1.5 V AA/LR6 is required - is not included). Because radio signal is necessary only for countries with Central European Time (CET) up to a maximum distance radius of about 1500 kilometres around Frankfurt/Main (Germany) usable
 weight approx. 470 g



Rule board international DIN A4

art. no. 82909

with picture language for steam bath, 2-coloured illustration (copyright), company logo imprint is possible. Water-, damp- and abrasion-resistant laminated
 dim.: WxH approx. 215x300 mm
 weight approx. 35 g

Rule boards in English or Spanish

are available on request



Sand timer 15 min.

art. no. 82251

turnable casing made of white PVC - suitable for max. temperature of 70 °C, with printed minute scale (registered design protection), glass cylinder with black sand (sand colours green, blue, dark brown or red are available on request) - duration tolerance +/- 2 min.
 dim.: WxHxD approx. 50x275x20 mm
 weight approx. 330 g



Thermometer made of stainless steel

art. no. 8221

with edging to screw on, totally waterproof - therefore easy to read in the steam bath room because glass does not fog, scale white Ø approx. 90 mm - steam bath temperature marked in colour
 dim.: WxD approx. 130x26 mm
 weight approx. 305 g

We are here for you

Markus Hahn
Graduate Business Economist
Managing director
+49 (0)821 25797-19
markus.hahn@elsaesser.de



Wolfgang Hahn
Accountant
Attorney Finances
+49 (0)821 25797-13
wolfgang.hahn@elsaesser.de

Petra Hahn
Creative Design
+49 (0)821 25797-19
petra.hahn@elsaesser.de



Carmen Beer-Haensel
Management Assistant in
Wholesale & Foreign Trade
Customer Service
+49 (0)821 25797-24
carmen.beer-haensel@elsaesser.de

Sandra Wunder
Office Management Assistant
Sales/Dispatch
+49 (0)821 25797-21
sandra.wunder@elsaesser.de



Thomas Ebert
Bachelor Professional of
Trade and Commerce (CCI)
Sales/Export
+49 (0)821 25797-20
thomas.ebert@elsaesser.de

Juri Fischer
Gas heaters/Technology
+49 (0)821 25797-29
juri.fischer@elsaesser.de



Madeleine Egger
Handelsfachwirtin
Marketing
+49 (0)821 25797-16
madeleine.egger@elsaesser.de

Irene Hoess
Bachelor Professional of
Foreign Trade (CCI)
Purchasing/Import
+49 (0)821 25797-11
irene.hoess@elsaesser.de



Sigrid Wiedemann
Office Management Assistant
Accounting/Office
+49 (0)821 25797-12
sigrid.wiedemann@elsaesser.de

Roxana Rulewski
Trainee Bachelor Professional of
Trade and Commerce (CCI)
roxana.rulewski@elsaesser.de



Office hours:
Mon. - Thu. 8:00 - 12:00 and 13:00 - 16:30
Friday 8:00 - 12:00 and 13:00 - 15:00

In 1905 company founder Johann Elsässer laid the first foundations for his factory slow-burning stoves and hearths. In 1930 the trade mark eliga (Elsässer in Göggingen Augsburg) was registered. The first eliga oven constructions were trend-setting for the whole oven industry. In 1968 Rainer Hahn took over the business management and the company Elsässer has been specialised in a wide range of sauna heaters, sauna accessories and articles for steam bath. Since 2004 his son Markus Hahn has lead the company. Elsässer now produces a large number of sauna technology and accessory products, gas sauna heaters as well as door hinges, door closures and handles for glass and wooden doors. Our unique and partly patented products are valued worldwide by sauna manufacturers, specialist dealers and specialists of the sauna and wellness business as well as manufacturers and specialist dealers for glass doors.

ELSÄSSER GmbH
Alpenstraße 48
86159 Augsburg/Germany
Tel. +49 (0)821 25797 - 0
Fax +49 (0)821 25797 - 40
info@elsaesser.de
www.eliga.com

